

The Thriving Natural Ecological Balance

*A Comparative Analysis of Free-Roaming Wild Horses & Burros
In Relation to Habitat, Wildlife and Livestock Populations*



C.R. MacDonald
October 2009

The Thriving Natural Ecological Balance
A Comparative Analysis of Free-Roaming Wild Horses & Burros
In Relation to Habitat, Wildlife and Livestock Populations
Compiled by C.R. MacDonald, October 2009

Comparison Charts

I. Habitat/Overview

Chart 1 - Wild horse and burro Herd Management Area acreage in relation to all federally managed lands.

Chart 2 - Wild horse and burro Herd Management Area acreage in relation to BLM only managed lands.

Chart 3 - Wild horse and burro habitat loss. Herd Area acreage occupied by wild horses and burros in 1971 in relation to current Herd Management Area acreage.

Chart 4- 2009 Wild burro herd loss since 1971.

II. Forage Allocations/National

Chart 5 - National percentage of forage authorized for livestock use in 2009 in comparison to established AMLs (Allowable Management Levels) for wild horses and burros.

Chart 6 - National percentage of forage actually used by livestock in 2009 in comparison to established AMLs (Allowable Management Levels) for wild horses and burros.

Chart 7 - National percentage of forage authorized for livestock use in 2009 in comparison to established AMLs (Allowable Management Levels) for wild horses only.

Chart 8 - National percentage of forage actually used by livestock in comparison to established AMLs (Allowable Management Levels) for wild horses only.

Chart 9 - National percentage of forage authorized for livestock use in 2009 in comparison to established AMLs (Allowable Management Levels) for wild burros only.

Chart 10 - National percentage of forage actually used by livestock in 2009 in comparison to established AMLs (Allowable Management Levels) for wild burros only.

III. Wildlife

Chart 11 - 2009 elk population estimates in comparison to established AMLs (Allowable Management Levels) for wild horses and burros in AZ, CA, CO, ID, MT, NM, NV, OR, WY, UT.

III. Wildlife (continued)

Chart 12 - National pronghorn antelope population estimates in states affecting wild horses and burros compared to WH&B national AML only.

Chart 13- National bighorn population estimates (all species) compared to WH&B national AML only.

Chart 14 - National bighorn population estimates (all species) compared to national burro AML only.

IV. State Distributions

Arizona

Chart 15: Arizona wild horse and burro habitat loss. Herd Area acreage occupied by wild horses and burros in 1971 in relation to current Herd Management Area acreage.

Chart 16: 2009 relative authorized proportions of wild horses, wild burros, *livestock authorizations*, elk, pronghorn antelope and bighorn sheep populations for the state of Arizona.

Chart 17: 2009 relative authorized proportions of wild horses, wild burros, *actual livestock use*, elk, pronghorn antelope and bighorn sheep populations for the state of Arizona.

California

Chart 18: California wild horse and burro habitat loss. Herd Area acreage occupied by wild horses and burros in 1971 in relation to current Herd Management Area acreage.

Chart 19: 2009 relative authorized proportions of wild horses, wild burros, *livestock authorizations*, elk, pronghorn antelope and bighorn sheep populations for the state of California.

Chart 20: 2009 relative authorized proportions of wild horses, wild burros, *actual livestock use*, elk, pronghorn antelope and bighorn sheep populations for the state of California.

Colorado

Chart 21: Colorado wild horse and burro habitat loss. Herd Area acreage occupied by wild horses and burros in 1971 in relation to 2008 Herd Management Area acreage.

Chart 22: 2009 relative authorized proportions of wild horses, *livestock authorizations*, elk, and pronghorn antelope populations for the state of Colorado.

IV. State Distributions (continued)

Chart 23: 2009 relative authorized proportions of wild horses, *actual livestock use*, elk, and pronghorn antelope populations for the state of Colorado.

Idaho

Chart 24: Idaho wild horse and burro habitat loss. Herd Area acreage occupied by wild horses and burros in 1971 in relation to 2008 Herd Management Area acreage.

Chart 25: 2009 relative authorized proportions of wild horses, *livestock authorizations*, mule deer, bighorn sheep and elk populations for the state of Idaho.

Chart 26: 2009 relative authorized proportions of wild horses, *actual livestock use*, mule deer, bighorn sheep and elk populations for the state of Idaho.

Montana

Chart 27: Montana wild horse and burro habitat loss. Herd Area acreage occupied by wild horses and burros in 1971 in relation to 2008 Herd Management Area acreage.

Chart 28: 2009 relative authorized proportions of wild horses, *livestock authorizations*, pronghorn antelope, elk, and bighorn sheep populations for the state of Montana.

Chart 29: 2009 relative authorized proportions of wild horses, *actual livestock use*, pronghorn antelope, elk, and bighorn sheep populations for the state of Montana.

Nevada

Chart 30: Nevada wild horse and burro habitat loss. Herd Area acreage occupied by wild horses and burros in 1971 in relation to 2008 Herd Management Area acreage.

Chart 31: 2009 relative authorized proportions of wild horses, *livestock authorizations*, mule deer, pronghorn antelope, elk, and bighorn sheep populations for the state of Nevada.

Chart 32: 2009 relative authorized proportions of wild horses, *actual livestock use*, mule deer, pronghorn antelope, elk, and bighorn sheep populations for the state of Nevada.

New Mexico

Chart 33: New Mexico wild horse and burro habitat loss. Herd Area acreage occupied by wild horses and burros in 1971 in relation to 2008 Herd Management Area acreage.

IV. State Distributions (continued)

Chart 34: 2009 relative authorized proportions of wild horses, *livestock authorizations*, mule deer, pronghorn antelope, elk, and bighorn sheep populations for the state of New Mexico.

Chart 35: 2009 relative authorized proportions of wild horses, *actual livestock use*, mule deer, pronghorn antelope, elk, and bighorn sheep populations for the state of New Mexico.

Oregon

Chart 36: Oregon wild horse and burro habitat loss. Herd Area acreage occupied by wild horses and burros in 1971 in relation to 2008 Herd Management Area acreage.

Chart 37: 2009 relative authorized proportions of wild horses, *livestock authorizations*, black tailed deer, pronghorn antelope, elk, and bighorn sheep populations for the state of Oregon.

Chart 38: 2009 relative authorized proportions of wild horses, *actual livestock use*, black tailed deer, pronghorn antelope, elk, and bighorn sheep populations for the state of Oregon.

Utah

Chart 39: Utah wild horse and burro habitat loss. Herd Area acreage occupied by wild horses and burros in 1971 in relation to 2008 Herd Management Area acreage.

Chart 40: 2009 relative authorized proportions of wild horses, *livestock authorizations*, mule deer, pronghorn antelope, elk, and bighorn sheep populations for the state of Utah.

Chart 41: 2009 relative authorized proportions of wild horses, *actual livestock use*, mule deer, pronghorn antelope, elk, and bighorn sheep populations for the state of Utah.

Wyoming

Chart 42: Wyoming wild horse and burro habitat loss. Herd Area acreage occupied by wild horses and burros in 1971 in relation to 2008 Herd Management Area acreage.

Chart 43: 2009 relative authorized proportions of wild horses, *livestock authorizations*, mule deer, pronghorn antelope, elk, and bighorn sheep populations for the state of Wyoming.

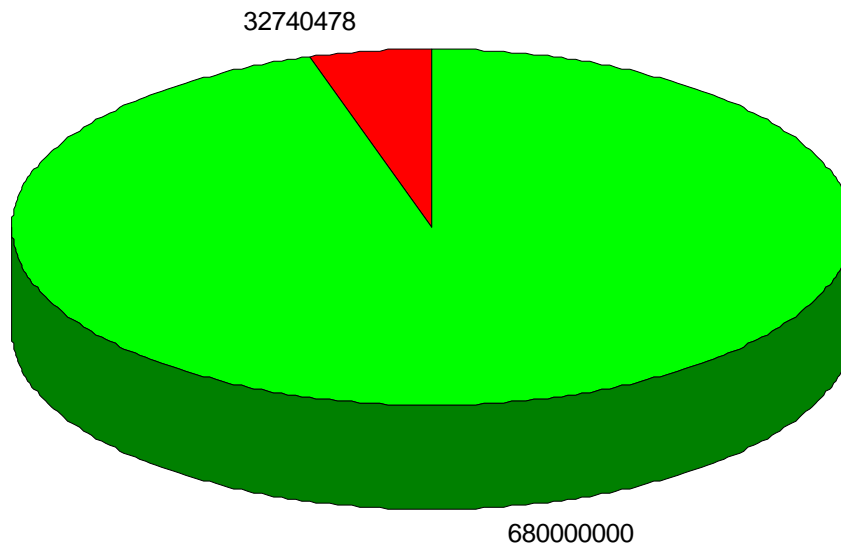
Chart 44: 2009 relative authorized proportions of wild horses, *actual livestock use*, mule deer, pronghorn antelope, elk, and bighorn sheep populations for the state of Wyoming.

Chart 1

Percentage of Wild Horse and Burro habitat as expressed in Herd Management Area acreage in relation to All Acreage of federally managed lands including lands in national forests, grasslands, parks, refuges, reservoirs, and military bases and installations. HMA acreage may include state, private and other agency land. HMA acreage is the most up-to-date and current numbers available and includes the almost 1.6 million acre loss BLM recently approved of withdrawing from wild horse and burro use in the Ely District that current BLM records fail to reflect.

Wild Horse & Burro Habitat (HMAs)

% of Acres - All Federally Managed Land



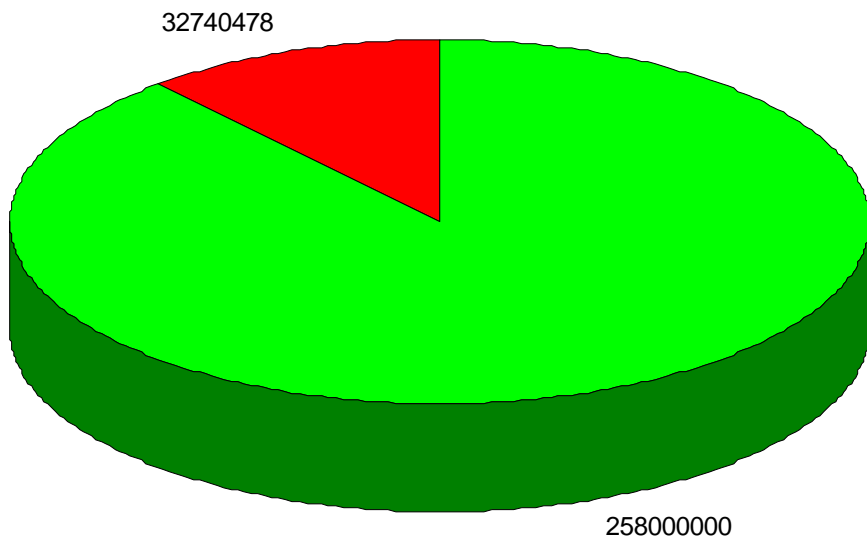
Wild Horse & Burro Herd Management Area Acreage: 32,740,478 (4.6%)
All Federally Managed Land/All Agencies: 680,000,000 (95.4%)

Chart 2

Percentage of Wild Horse & Burro Habitat as expressed in Herd Management Area acreage on BLM only managed Land. However, HMA acreage may include state, private and other agency land. HMA acreage is the most up-to-date and current numbers available and includes the almost 1.6 million acre loss BLM recently approved of withdrawing from wild horse and burro use in the Ely District that current BLM records fail to reflect.

Wild Horse & Burro Habitat (HMAs)

% of Acreage on BLM Managed Land Only



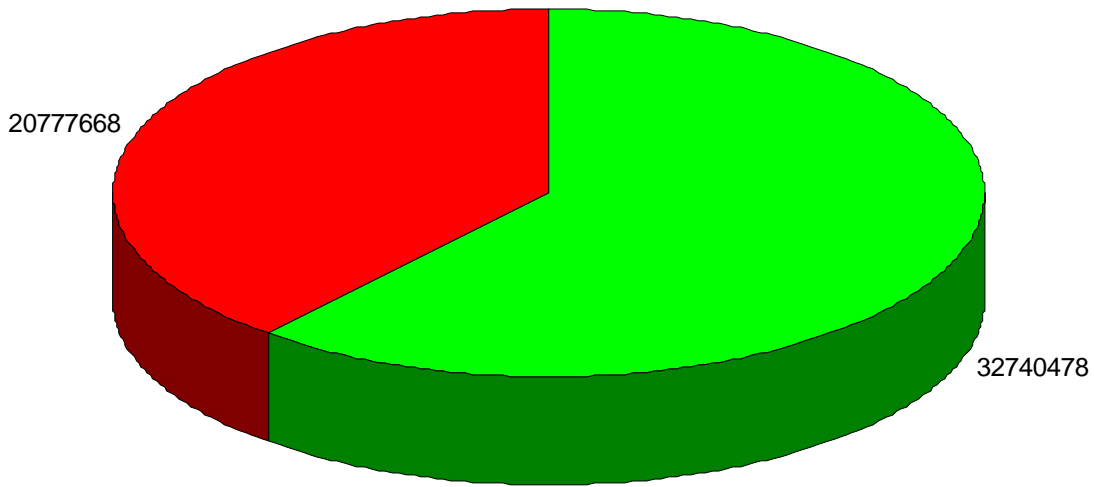
Wild Horse & Burro Herd Management Area Acreage: 32,740,478 (11.3%)
All BLM Managed Land: 258,000,000 (88.7%)

Chart 3

Acreage comparison of all herd area acreage where wild Horses & burros were found in 1971 and percentage of habitat loss for all acreage identified at the passage of the Act. Includes private, state and other agency managed lands.

Wild Horse & Burro Habitat Loss

Total Loss of All Acreage Since 1971



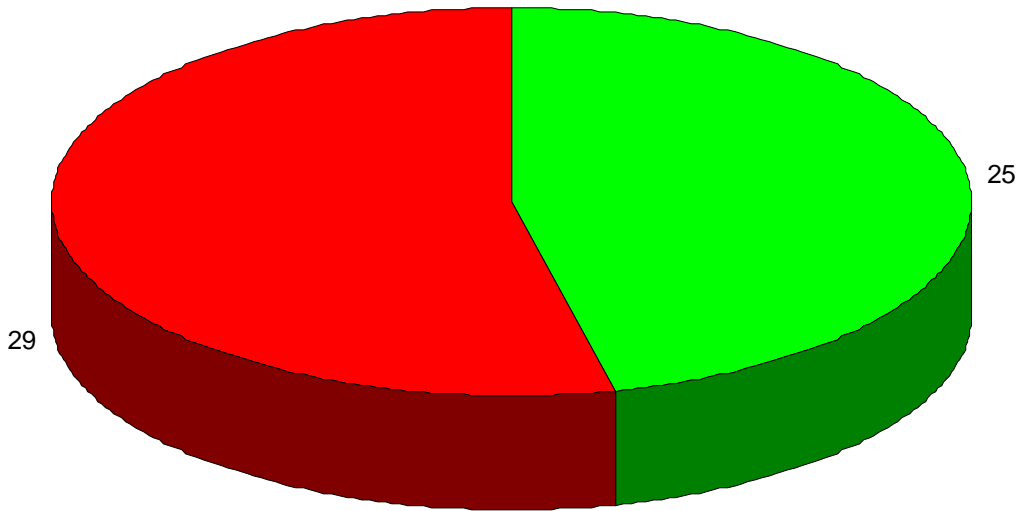
Wild Horse & Burro Herd Area Habitat in 1971: 53,518,146 Acres
Wild Horse & Burro Acreage Withdrawn from Use: -20,777,668 Acres (-37.8%)
Wild Horse & Burro Remaining Habitat: 32,740,478 Acres (61.2%)

Chart 4

At the passage of the 1971 Act, BLM identified 54 Herd Areas as occupied by wild burros nationally*. As of 2009, only 25 remain that have been officially designated for management and/or contain actual burro populations. Due to wild horse and burro habitats occasionally being combined in single HMAs, in order to isolate total impacts to wild burro herd loss, herd numbers vs. acreage has been used.

2009 BLM National Wild Burro Herds

Herd Loss Ratio Since 1971



Total Wild Burro Herds Identified In 1971: 54
Remaining Wild Burro Herds as of 2008: 25 (31.6%)
Wild Burro Herd Loss Since 1971: -29 Herds (-68.4%)

*Historical herd statistics taken from BLMs, "A Strategy to Achieve and Manage Wild Burros At Appropriate Management Levels", June 2000.

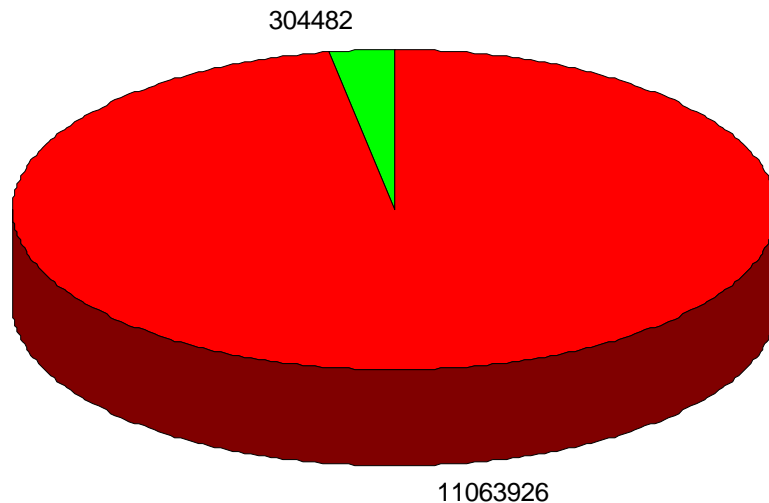
Chart 5

Ratio of forage allocated by BLM to livestock grazing versus wild horses and burros. Ratio established based on BLMs reported authorized livestock grazing for 2009 and allowed wild horse and burro forage allocations as expressed by approved "AMLs" (Appropriate Management Levels) in 2008. Current total national AML for both wild horses and burros is 26,831, (23,916 for wild horses and 2,915 for wild burros). This number includes the recent zeroing out of 12 Herd Management Areas in the Nevada Ely District that BLMs 2008 records fail to reflect.

Forage consumption estimates for wild horses based on 1 AUM per month per horse. Forage consumption estimates for wild burros based on 1/2 AUM per month per burro.

2009 BLM Authorized Forage Allocations

Livestock vs. Wild Horses & Burros



BLMs Total Livestock Authorizations for 2009: 11,063,926 AUMs*
BLMs Total National Wild Horse Authorizations for 2009: 286,992 AUMs
BLMs Total National Wild Burro Authorizations for 2009: 17,490 AUMs
Total National Forage Allocations for Wild Horses & Burros: 304,482 AUMs (2.7%)

*AUMs were taken from BLMs 2009 Rangeland Statistics available at:
<http://www.blm.gov/landandresourcesreports/rptapp/menu.cfm?appCd=6>

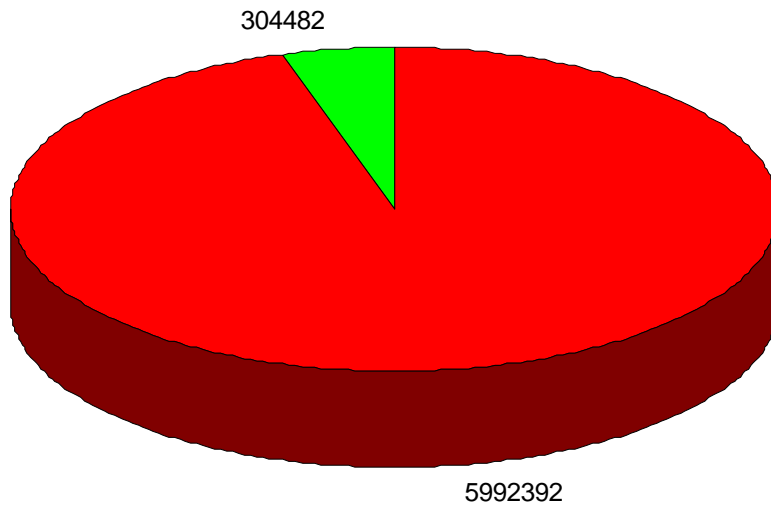
Chart 6

Ratio of forage allocated by BLM to livestock grazing in 2009 that was *actually used* based on BLMs reported livestock grazing for 2009 versus wild horse and burro forage allocations as expressed by approved "AMLs" (Appropriate Management Levels) in 2009. Current total national AML for both wild horses and burros is 26,831, (23,916 for wild horses and 2,915 for wild burros). This number includes the recent zeroing out of 12 Herd Management Areas in the Nevada Ely District that BLMs 2008 records fail to reflect.

Forage consumption estimates for wild horses based on 1 AUM per month per horse. Forage consumption estimates for wild burros based on 1/2 AUM per month per burro.

2009 BLM Livestock Actual Use

Livestock vs. Wild Horse & Burro AMLs



BLMs Total Livestock Actual Use for 2009: 5,992,392 AUMs*
BLMs Total National Wild Horse Authorizations for 2009: 286,992 AUMs
BLMs Total National Wild Burro Authorizations for 2009: 17,490 AUMs
Total National Forage Allocations for Wild Horses & Burros: 304,482 AUMs (4.8%)

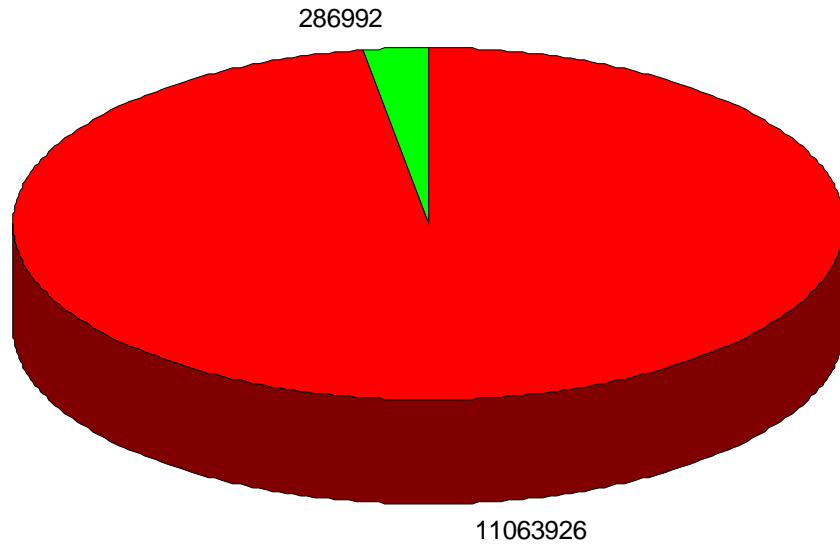
*AUMs were taken from BLMs 2009 Rangeland Statistics available at:
<http://www.blm.gov/landandresourcesreports/rptapp/menu.cfm?appCd=6>

Chart 7

Ratio of livestock forage allocation authorizations in 2009 vs. exclusive wild horse forage allocations as expressed by 2009 wild horse national AML of 23,916 animals.

2009 BLM Authorized Forage Allocations

Ratio of Livestock to Wild Horses Only



BLMs Total Livestock Authorizations for 2009: 11,063,926 AUMs*
BLMs Total National Wild Horse Authorizations for 2009: 286,992 AUMs (2.5%)

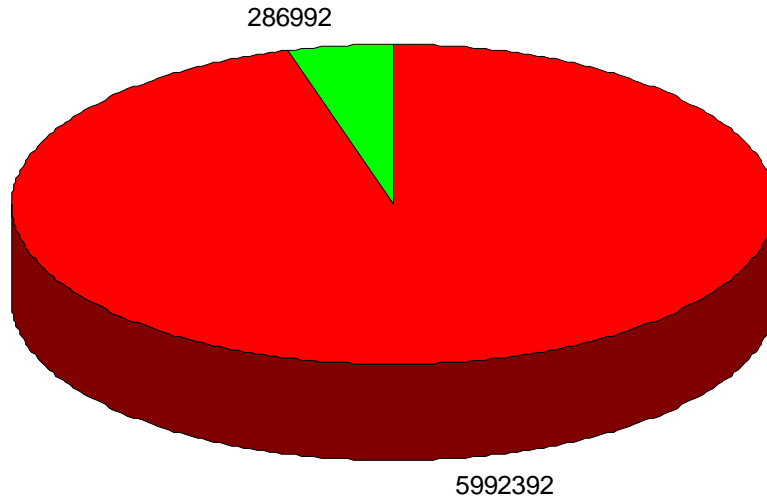
*AUMs were taken from BLMs 2009 Rangeland Statistics available at:
<http://www.blm.gov/landandresourcesreports/rptapp/menu.cfm?appCd=6>

Chart 8

Ratio of actual livestock forage used in 2009 vs. exclusive wild horse forage allocations as expressed by 2009 wild horse national AML of 23,916 animals.

2009 BLM Livestock Actual Use

Livestock vs. Wild Horse AMLs Only



BLMs Total Livestock Actual Use for 2009: 5,992,392 AUMs*
BLMs Total National Wild Horse Authorizations for 2009: 286,992 AUMs (4.6%)

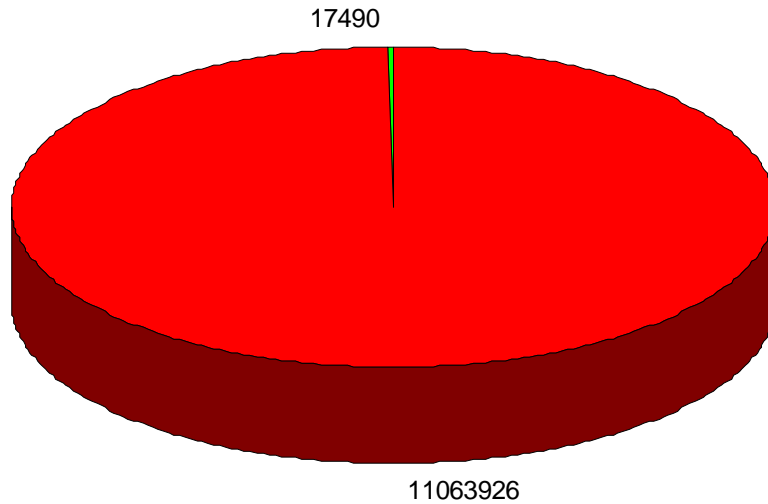
*AUMs were taken from BLMs 2009 Rangeland Statistics available at:
<http://www.blm.gov/landandresourcesreports/rptapp/menu.cfm?appCd=6>

Chart 9

Ratio of authorized livestock forage allocations in 2009 vs. exclusive wild burro forage allocations as expressed by 2009 wild burro national AML of 2,915 animals.

2009 BLM Authorized Forage Allocations

Livestock vs. Wild Burro AML Only



BLMs Total Livestock Authorize Use for 2009: 11,063,926 AUMs*
BLMs Total National Wild Burro Authorizations for 2009: 17,490 AUMs (0.2%)

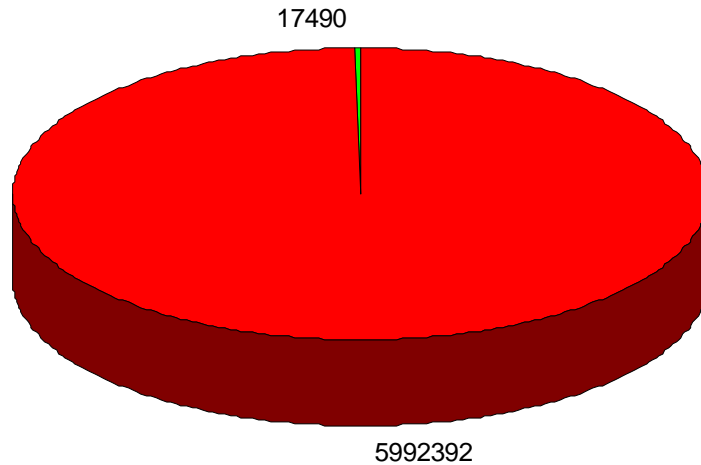
*AUMs were taken from BLMs 2009 Rangeland Statistics available at:
<http://www.blm.gov/landandresourcesreports/rptapp/menu.cfm?appCd=6>

Chart 10

Ratio of actual livestock forage used in 2009 vs. exclusive wild burro forage allocations as expressed by 2009 wild burro national AML of 2,915 animals.

2009 BLM Livestock Actual Use

Livestock vs. Wild Burro AML Only



BLMs Total Livestock Actual Use for 2009: 5,992,392 AUMs*
BLMs Total National Wild Burro Authorizations for 2009: 17,490 AUMs (0.3%)

*AUMs were taken from BLMs 2009 Rangeland Statistics available at:
<http://www.blm.gov/landandresourcesreports/rptapp/menu.cfm?appCd=6>

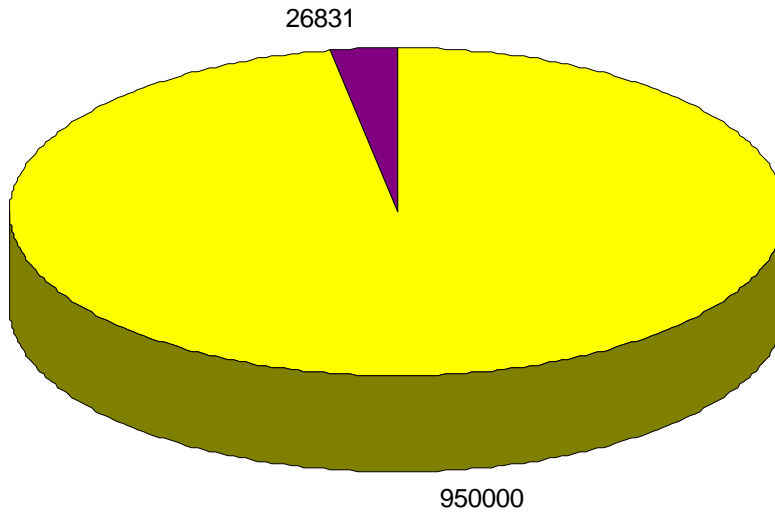
Chart 11

2009 Elk populations estimated at 950,000 in AZ, CA, CO, ID, MT, NM, NV, OR, WY, UT vs. BLMs national established AMLs (Appropriate Management Levels) for wild horses and burros in these same states.

Current total national AML for both wild horses and burros is 26,831, (23,916 for wild horses and 2,915 for wild burros). This number includes the recent zeroing out of 12 Herd Management Areas in the Nevada Ely District that BLMs 2008 records fail to reflect.

2009: Wildlife Populations/Elk

10 States - WH&B AMLs Only



Wild Horse and Burro AMLs: 26,831 (2.7%)
2009 Elk population estimates: 950,000 (97.3%)

2009 Elk populations obtained from Rocky Mountain Elk Foundation at:
<http://www.rmef.org/NewsandMedia/NewsReleases/2009/ElkPopulations.htm>

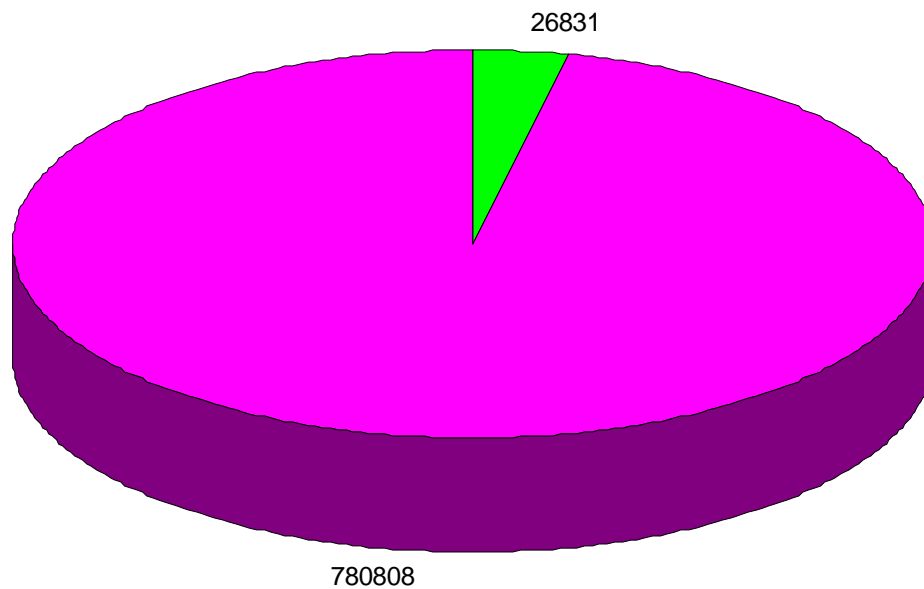
Chart 12

Pronghorn antelope population estimates in AZ, CA, CO, NV, MT, NM, OR, UT, WY. Data is missing from ID. Minimum estimated pronghorn antelope population in states affecting wild horses and burros total 780,808 animals.

Current total national AML (Allowable Management Levels) for both wild horses and burros is 26,831, (23,916 for wild horses and 2,915 for wild burros). This number includes the recent zeroing out of 12 Herd Management Areas in the Nevada Ely District that BLMs 2008 records fail to reflect.

2009: Wildlife Populations/Pronghorn

9 States - WH&B AMLs Only



National Wild Horse & Burro AMLs: 26,831 (3.3%)

Minimum Pronghorn Antelope Population: 780,808* (96.7%)

AZ: 8,000 - CA: 5,000 - CO: 54,070 - NV: 24,500 - NM: 63,000 - OR: 13,238 - UT:13,000 - MT/WY: 600,000,

*2002 Pronghorn Antelope populations obtained from Pronghorn Population Totals as of 2002, Nevada's Pronghorn Antelope: Ecology, Management and Conservation, Nevada Department of Wildlife, 2003, Table 2, available at: <http://www.ndow.org/about/pubs/pdf/reports/pronghorn.pdf>

2006 Pronghorn antelope population estimates for MT, WY were obtained from Conservation of the Northern Yellowstone Pronghorn: A Report and Possible Approach for NPCA's Involvement, Blank, Intern, Stevens, July 2006, National Parks Conservation Association, pg. 1, MT/WY average.

2009 NM pronghorn antelope population obtained from NM Fish & Game at:

<http://www.wildlife.state.nm.us/commission/presentations/documents/PronghornManagement.pdf>

2009 NV pronghorn antelope population estimates obtained from Nevada Department of Wildlife at:

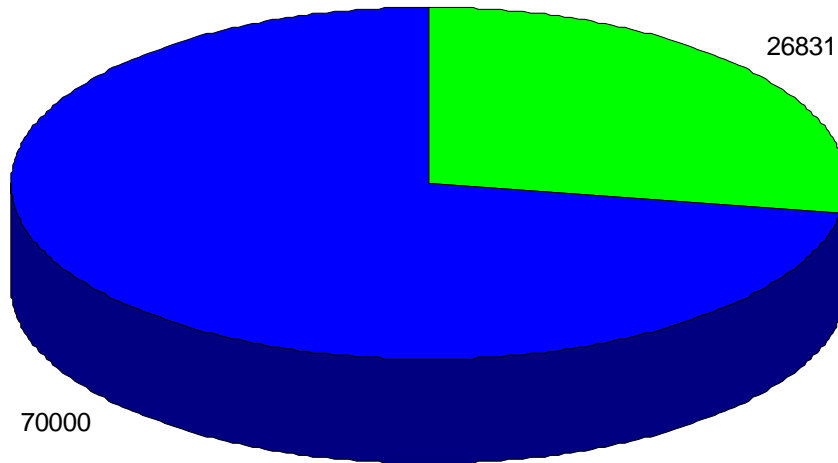
<http://www.ndow.org/>

Chart 13

2008 Bighorn sheep population (national/all species) vs. BLM National Wild Horse and Burro AMLs only.

2009: Wildlife Populations/Bighorn

National Bighorn vs. WH&B AMLs Only



National Wild Horse & Burro AMLs (2009): 26,831 (27.7%)
National Bighorn Population Estimates (2008): 70,000 (72.3%)

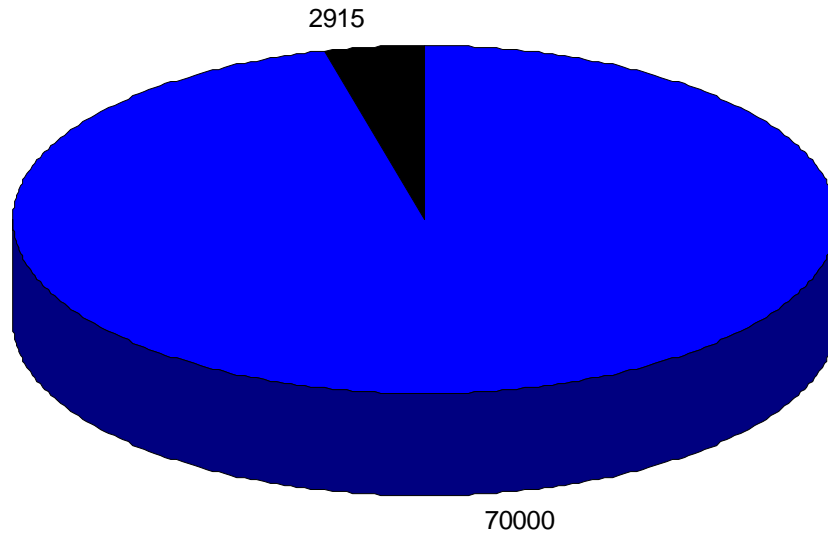
2008 National bighorn sheep population estimates found at: "Bighorn Facing Smaller Habitat, Federal agency wants to reduce protected area by more than 50%", Mike Lee, Union-Tribune [San Diego], March 23, 2008
<http://theguzzler.blogspot.com/search/label/Anza-Borrego%20Desert%20State%20Park>

Chart 14

2008 Bighorn sheep population (national/all species) vs. BLM National Wild Burro AML only.

2007 Bighorn/Wild Burro Distribution

All Bighorn (National) vs BLM Burro AML



BLM Wild Burro AML (2009): 2,915 (4%)
2007 National Bighorn sheep population/all species (2008): 70,000 (96%)

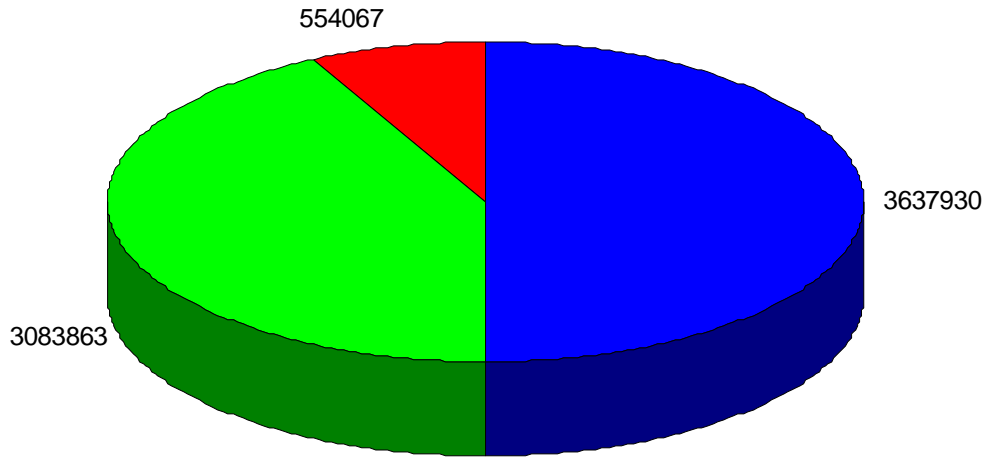
2007 National bighorn sheep population estimates found at: "Bighorn Facing Smaller Habitat, Federal agency wants to reduce protected area by more than 50%", Mike Lee, Union-Tribune [San Diego], March 23, 2008
<http://theguzzler.blogspot.com/search/label/Anza-Borrego%20Desert%20State%20Park>

Chart 15 - Arizona

Arizona wild horse and burro habitat loss. Herd Area acreage occupied by wild horses and burros in 1971 in relation to 2008 Herd Management Area acreage.

AZ Wild Horse & Burro Habitat

HA Acreage vs HMA Acreage



AZ WH&B Herd Area (HA) Acreage in 1971: 3,637,930 Acres

AZ WH&B Herd Management Area (HMA) Acreage in 2008: 3,083,863 Acres (84.8%)

AZ Habitat Loss: -554,067 Acres (-15.2%)

All acreage taken from BLMs National Program Office - FY08 Arizona's Herd Management Area Statistics.

Chart 16 – Arizona

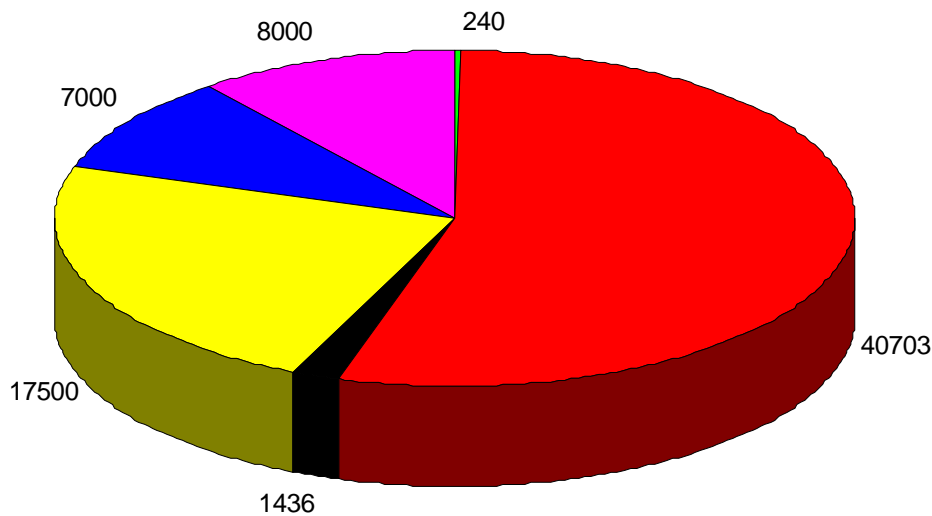
Relative authorized proportions of wild horses, wild burros, livestock authorizations, elk, pronghorn antelope and bighorn sheep populations for the state of Arizona.

Livestock populations were calculated using BLMs 2009 Arizona Livestock Authorization Report of annual forage allocations as represented by Animal Unit Months (AUMs) *authorized for livestock use* and divided by 12 to represent the potential head of cattle this allocation represents as expressed through year-round grazing.

Wild horse and burro populations are represented by AMLs (Allowable Management Levels).

2009 AZ: Population Distributions

Statewide Relative Proportions



- AZ Wild Horse AML (2008): 240 (0.3%)
- AZ Wild Burro AML (2008): 1,436 (1.9%)
- AZ Bighorn Sheep (2008): 7,000 (9.3%)
- AZ Elk (2009): 17,500 (23.4%)
- AZ Pronghorn Antelope (2002): (10.7%)
- AZ Authorized Use/Cattle (2009): 40,703 (54.4%)

2008 Wild Horse & Burro AMLs reported by BLMs National Program Office Herd Management Area Statistics.
2009 Bighorn Sheep populations obtained from Arizona’s Game & Fish Division at: <http://www.azgfd.gov/>
2009 Elk populations obtained from the Rocky Mountain Elk Foundation at:
<http://www.rmef.org/NewsandMedia/NewsReleases/2009/ElkPopulations.htm>
2002 Pronghorn Antelope populations obtained from Pronghorn Population Totals as of 2002, Nevada’s Pronghorn Antelope: Ecology, Management and Conservation, Nevada Department of Wildlife, 2003, Table 2, available at:
<http://www.ndow.org/about/pubs/pdf/reports/pronghorn.pdf>

Chart 17 – Arizona

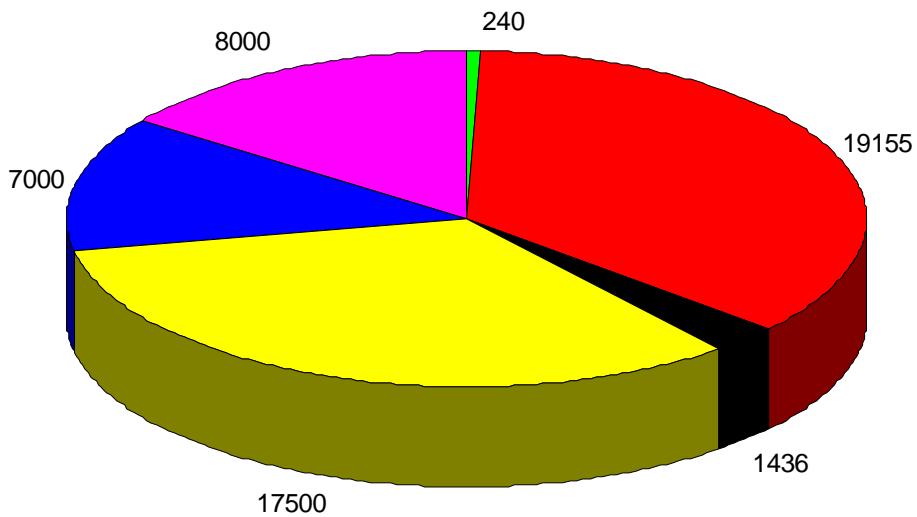
Relative authorized proportions of wild horses, wild burros, livestock authorizations, elk, pronghorn antelope and bighorn sheep populations for the state of Arizona.

Livestock populations were calculated using BLMs 2009 Arizona Livestock Authorization Report of annual forage allocations as represented by Animal Unit Months (AUMs) *actually used by livestock in 2009* and divided by 12 to represent the potential head of cattle this allocation represents as expressed through year-round grazing.

Wild horse and burro populations are represented by AMLs (Allowable Management Levels) issued by BLM.

2009 AZ: Population Distributions

Statewide Relative Proportions



- AZ Wild Horse AML (2008): 240 (0.5%)
- AZ Wild Burro AML (2008): 1,436 (2.7%)
- AZ Bighorn Sheep (2008): 7,000 (13.1%)
- AZ Pronghorn Antelope (2002): 8,000 (15%)
- AZ Elk (2009): 17,500 (32.8%)
- AZ Actual Use/Cattle (2009): 19,155 (35.9%)

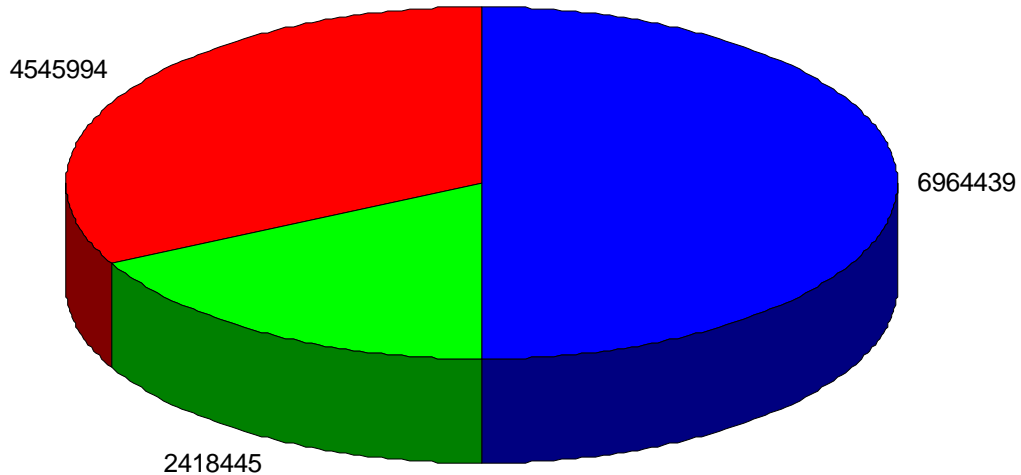
2008 Wild Horse & Burro AMLs reported by BLMs National Program Office Herd Management Area Statistics.
2009 Bighorn Sheep populations obtained from Arizona’s Game & Fish Division.
2009 Elk populations obtained from the Rocky Mountain Elk Foundation at:
<http://www.rmef.org/NewsandMedia/NewsReleases/2009/ElkPopulations.htm>
2002 Pronghorn Antelope populations obtained from Pronghorn Population Totals as of 2002, Nevada’s Pronghorn Antelope: Ecology, Management and Conservation, Nevada Department of Wildlife, 2003, Table 2, available at:
<http://www.ndow.org/about/pubs/pdf/reports/pronghorn.pdf>

Chart 18 - California

California wild horse and burro habitat loss. Herd Area acreage occupied by wild horses and burros in 1971 in relation to 2008 Herd Management Area acreage.

CA Wild Horse & Burro Habitat

HA Acreage vs HMA Acreage



CA WH&B Herd Area (HA) Acreage in 1971: 6,964,439 Acres
CA WH&B Herd Management Area (HMA) Acreage in 2008: 2,418,445 Acres (34.8%)
CA Habitat Loss: - 4,545,994 Acres (-65.2%)

All acreage taken from BLMs National Program Office - FY08 California's Herd Management Area Statistics.

Chart 19 - California

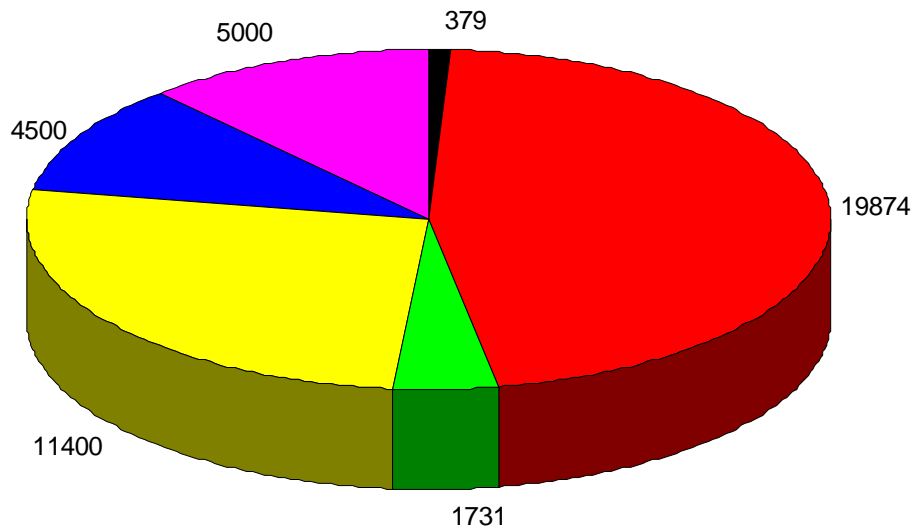
Relative authorized proportions of wild horses, wild burros, livestock authorizations, elk, pronghorn antelope and bighorn sheep populations for the state of California.

Livestock populations were calculated using BLMs 2009 California’s Livestock Authorization Report of annual forage allocations as represented by Animal Unit Months (AUMs) authorized for livestock use in 2009 and divided by 12 to represent the potential head of cattle this allocation represents as expressed through year-round grazing.

Wild horse and burro populations are represented by BLM AMLs (Allowable Management Levels) minus AMLs with no reported populations.

2009 CA: Population Distributions

Statewide Relative Proportions



- CA Wild Horse AML (2008): 1,731 (4%)
- CA Wild Burro AML (2008): 379 (0.9%)
- CA Bighorn Sheep (2004): 4,500 (10.5%)
- CA Pronghorn Antelope (2002): 5,000 (11.7%)
- CA Elk (2009): 11,400 (26.6%)
- CA Authorized Use/Cattle (2009): 19,874 (46.3%)

2008 Wild Horse & Burro AMLs reported by BLMs National Program Office Herd Management Area Statistics.
2004 CA bighorn sheep population estimates taken from: 2003 Desert Bighorn Council Transactions: Volume 47: Status of bighorn sheep in California, Pg. 8, Table 4, Median Average.
2002 Pronghorn Antelope populations obtained from Pronghorn Population Totals as of 2002, Nevada’s Pronghorn Antelope: Ecology, Management and Conservation, Nevada Department of Wildlife, 2003, Table 2, available at: <http://www.ndow.org/about/pubs/pdf/reports/pronghorn.pdf>
2009 Elk populations obtained from the Rocky Mountain Elk Foundation at: <http://www.rmef.org/NewsandMedia/NewsReleases/2009/ElkPopulations.htm>

Chart 20 – California

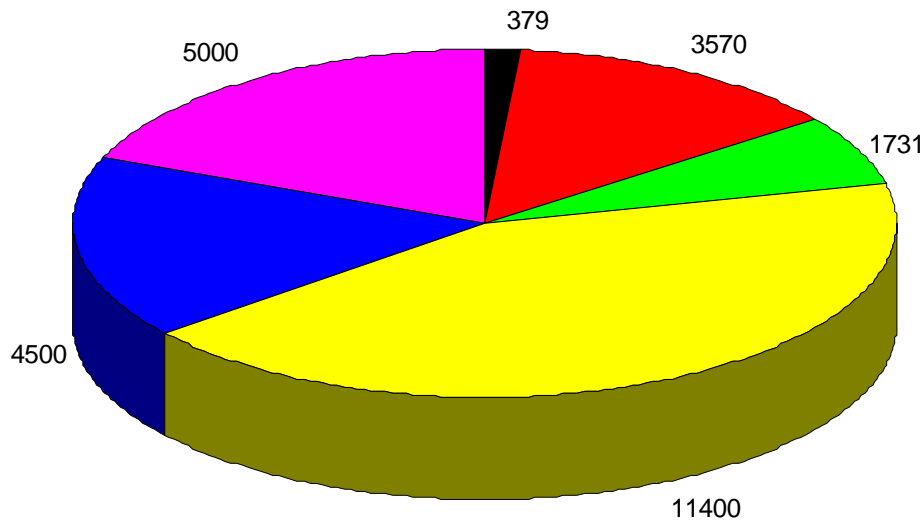
Relative authorized proportions of wild horses, wild burros, livestock authorizations, elk, pronghorn antelope and bighorn sheep populations for the state of California.

Livestock populations were calculated using BLMs 2009 California’s Livestock Authorization Report of annual forage allocations as represented by Animal Unit Months (AUMs) *actually used by livestock* in 2009 and divided by 12 to represent the potential head of cattle this allocation represents as expressed through year-round grazing.

Wild horse and burro populations are represented by BLM AMLs (Allowable Management Levels) minus AMLs with no reported populations.

2009 CA: Population Distributions

Statewide Relative Proportions



CA Wild Horse AML (2008): 1,731 (6.5%)
CA Wild Burro AML (2008): 379 (1.4%)
CA Bighorn Sheep (2004): 4,500 (16.9%)
CA Pronghorn Antelope (2002): 5,000 (18.8%)
CA Elk (2009): 11,400 (42.9%)
CA Actual Use/Cattle (2009): 3,570 (8.4%)

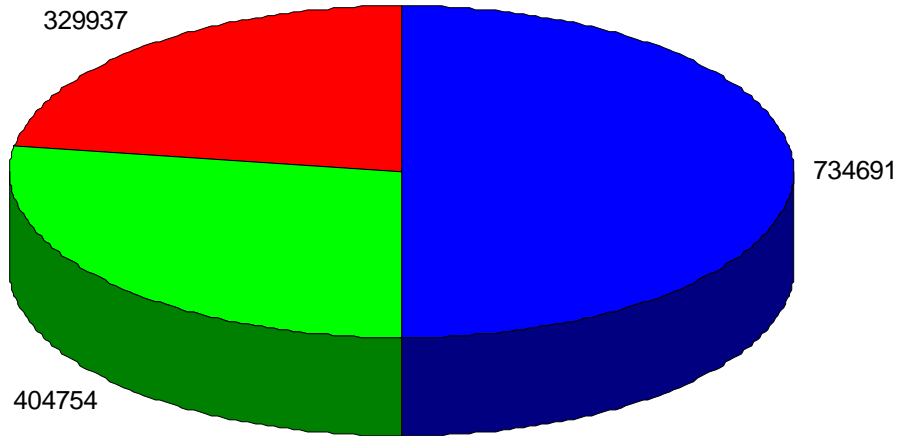
2008 Wild Horse & Burro AMLs reported by BLMs National Program Office Herd Management Area Statistics.
2004 CA bighorn sheep population estimates taken from: 2003 Desert Bighorn Council Transactions: Volume 47: Status of bighorn sheep in California, Pg. 8, Table 4, Median Average.
2002 Pronghorn Antelope populations obtained from Pronghorn Population Totals as of 2002, Nevada’s Pronghorn Antelope: Ecology, Management and Conservation, Nevada Department of Wildlife, 2003, Table 2, available at: <http://www.ndow.org/about/pubs/pdf/reports/pronghorn.pdf>
2009 Elk populations obtained from the Rocky Mountain Elk Foundation at: <http://www.rmef.org/NewsandMedia/NewsReleases/2009/ElkPopulations.htm>

Chart 21 - Colorado

Colorado wild horse and burro habitat loss. Herd Area acreage occupied by wild horses and burros in 1971 in relation to 2008 Herd Management Area acreage.

CO Wild Horse & Burro Habitat

HA Acreage vs. HMA Acreage



CO WH&B Herd Area (HA) Acreage in 1971: 734,691 Acres
CO WH&B Herd Management Area (HMA) Acreage in 2008: 404,754 Acres (55%)
CO Habitat Loss: - 328,937 Acres (-45%)

All acreage taken from BLMs National Program Office - FY08 Colorado's Herd Management Area Statistics.

Chart 22 - Colorado

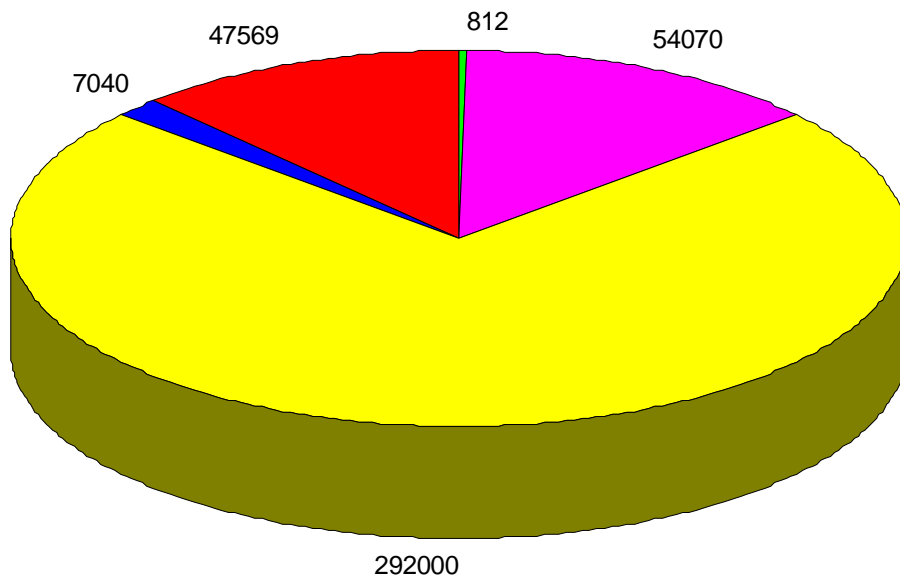
Relative authorized proportions of wild horses, wild burros, livestock authorizations, elk, and pronghorn antelope populations for the state of Colorado.

Livestock populations were calculated using BLMs 2009 Colorado Livestock Authorization Report of annual forage allocations as represented by Animal Unit Months (AUMs) authorized for livestock use in 2009 and divided by 12 to represent the potential head of cattle this allocation represents as expressed through year-round grazing.

Wild horse populations are represented by AMLs (Allowable Management Levels) issued by BLM for 2008.

2009 CO: Population Distributions

Statewide Relative Proportions



- CO Wild Horse AML (2008): 812 (0.2%)
- CO Bighorn Sheep (2007): 7,040 (1.8%)
- CO Pronghorn Antelope (2002): 54,070 (13.5%)
- CO Elk (2009): 292,000 (72.7%)
- CO Authorized Use/Cattle (2009): 47,569 (11.8%)

2008 Wild Horse & Burro AMLs reported by BLMs National Program Office Herd Management Area Statistics.

2007 Bighorn Sheep population obtained from CO Bighorn Sheep Management Plan at:

<http://wildlife.state.co.us/NR/rdonlyres/C2732FE5-DAC7-40DE-9AC6-7C3A3FB2C349/0/ColoradoBighornSheepManagementPlan20092019.pdf>

2002 Pronghorn Antelope populations obtained from Pronghorn Population Totals as of 2002, Nevada's Pronghorn Antelope: Ecology, Management and Conservation, Nevada Department of Wildlife, 2003, Table 2, available at:

<http://www.ndow.org/about/pubs/pdf/reports/pronghorn.pdf>

2009 Elk populations obtained from the Rocky Mountain Elk Foundation at:

<http://www.rmef.org/NewsandMedia/NewsReleases/2009/ElkPopulations.htm>

Chart 23 - Colorado

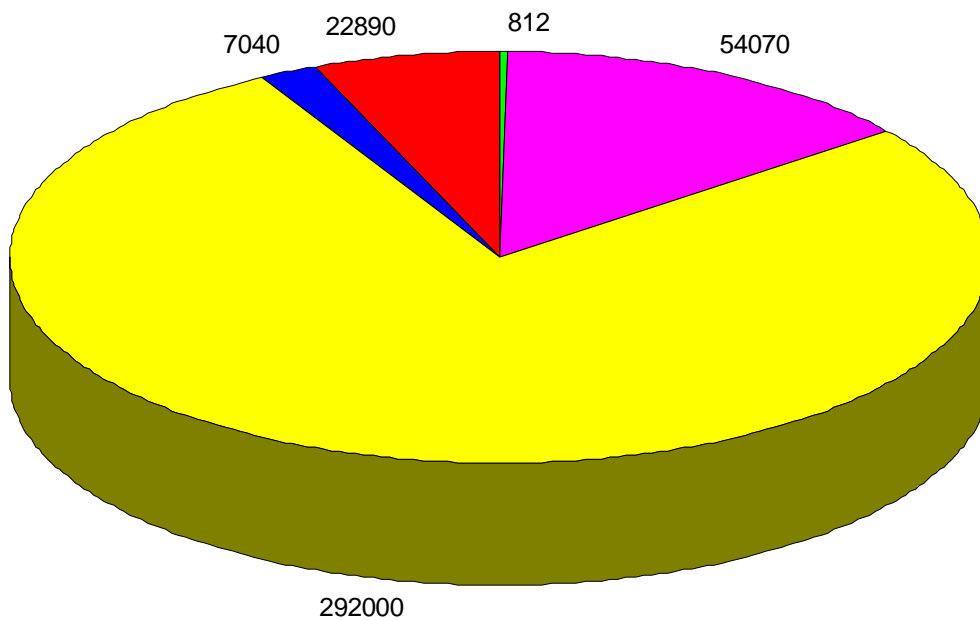
Relative authorized proportions of wild horses, wild burros, livestock authorizations, elk, and pronghorn antelope populations for the state of Colorado.

Livestock populations were calculated using BLMs 2009 Colorado Livestock Authorization Report of annual forage allocations as represented by Animal Unit Months (AUMs) *authorized for livestock use* in 2009 and divided by 12 to represent the potential head of cattle this allocation represents as expressed through year-round grazing.

Wild horse populations are represented by AMLs (Allowable Management Levels) issued by BLM for 2008.

2009 CO: Population Distributions

Statewide Relative Proportions

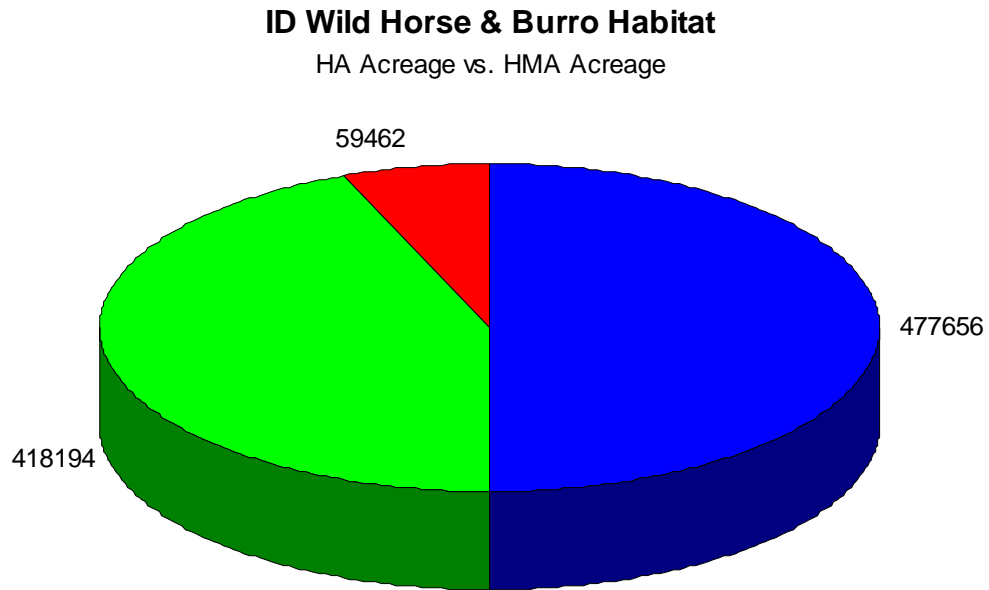


CO Wild Horse AML (2008): 812 (0.2%)
CO Bighorn Sheep (2007): 7,040 (1.9%)
CO Pronghorn Antelope (2002): 54,070 (14.3%)
CO Elk (2009): 292,000 (77.5%)
CO Actual Use/Cattle (2009): 22,890 (6.1%)

2008 Wild Horse & Burro AMLs reported by BLMs National Program Office Herd Management Area Statistics.
2007 Bighorn Sheep population obtained from CO Bighorn Sheep Management Plan at:
<http://wildlife.state.co.us/NR/rdonlyres/C2732FE5-DAC7-40DE-9AC6-7C3A3FB2C349/0/ColoradoBighornSheepManagementPlan20092019.pdf>
2002 Pronghorn Antelope populations obtained from Pronghorn Population Totals as of 2002, Nevada's Pronghorn Antelope: Ecology, Management and Conservation, Nevada Department of Wildlife, 2003, Table 2, available at:
<http://www.ndow.org/about/pubs/pdf/reports/pronghorn.pdf>
2009 Elk populations obtained from the Rocky Mountain Elk Foundation at:
<http://www.rmef.org/NewsandMedia/NewsReleases/2009/ElkPopulations.htm>

Chart 24 - Idaho

Idaho wild horse and burro habitat loss. Herd Area acreage occupied by wild horses and burros in 1971 in relation to 2008 Herd Management Area acreage.



ID WH&B Herd Area (HA) Acreage in 1971: 477,656 Acres
ID WH&B Herd Management Area (HMA) Acreage in 2008: 418,194 Acres (87.6%)
ID Habitat Loss: -59,462 Acres (-12.4%)

All acreage taken from BLMs National Program Office - FY08 Idaho's Herd Management Area Statistics.

Chart 25 - Idaho

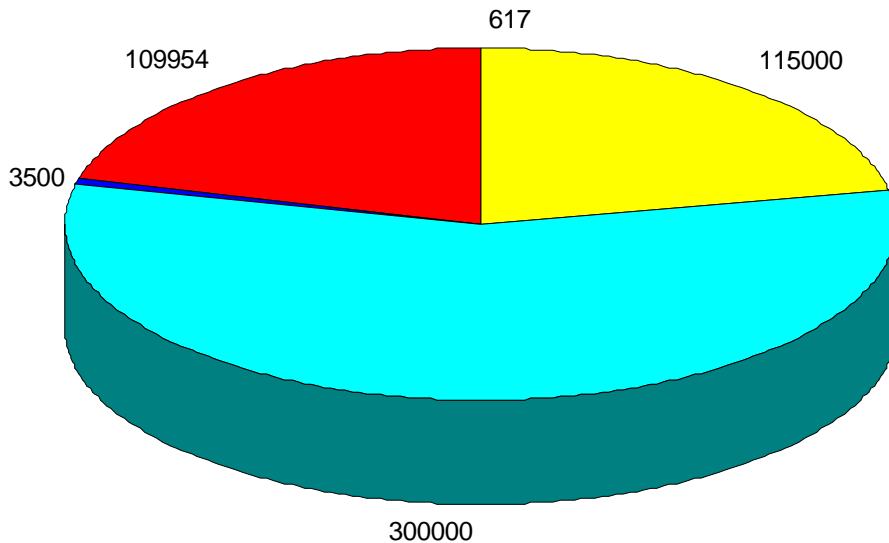
Relative authorized proportions of wild horses, wild burros, livestock authorizations, elk, and pronghorn antelope populations for the state of Colorado.

Livestock populations were calculated using BLMs 2009 Colorado Livestock Authorization Report of annual forage allocations as represented by Animal Unit Months (AUMs) authorized for livestock use in 2009 and divided by 12 to represent the potential head of cattle this allocation represents as expressed through year-round grazing.

Wild horse populations are represented by AMLs (Allowable Management Levels) issued by BLM for 2008.

2009 ID: Population Distributions

Statewide Relative Proportions



- ID Wild Horse AML (2008): 617 (0.1%)
- ID Bighorn (2009): 3,500 (0.7%)
- ID Elk (2009): 115,000 (21.7%)
- ID Mule Deer (2009): 300,000 (56.7%)
- ID Authorized Use/Cattle (2009): 109,954 (20.8%)

2008 Wild Horse & Burro AMLs reported by BLMs National Program Office Herd Management Area Statistics.
2009 Bighorn sheep populations obtained from Western Watersheds Project at:
<http://www.westernwatersheds.org/news-media/online-messenger/www-acts-protect-bighorn-sheep-central-idaho>
2009 Mule Deer Populations obtained from ID Fish & Game.
2009 Elk populations obtained from the Rocky Mountain Elk Foundation at:
<http://www.rmef.org/NewsandMedia/NewsReleases/2009/ElkPopulations.htm>

Chart 26 - Idaho

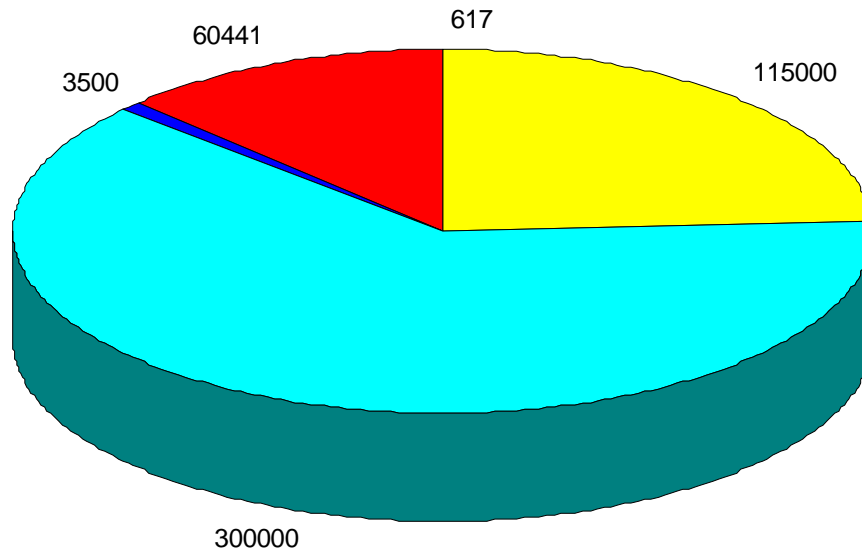
Relative authorized proportions of wild horses, wild burros, livestock authorizations, elk, and pronghorn antelope populations for the state of Idaho.

Livestock populations were calculated using BLMs 2009 Idaho Livestock Authorization Report of annual forage allocations as represented by Animal Unit Months (AUMs) *livestock actually used* in 2009 and divided by 12 to represent the potential head of cattle this allocation represents as expressed through year-round grazing.

Wild horse populations are represented by AMLs (Allowable Management Levels) issued by BLM for 2008.

2009 ID: Population Distributions

Statewide Relative Proportions



ID Wild Horse AML (2008): 617 (0.1%)
ID Bighorn (2009): 3,500 (0.7%)
ID Elk (2009): 115,000 (24%)
ID Mule Deer (2009): 300,000 (62.2%)
ID Actual Use/Cattle: 60,441 (12.6%)

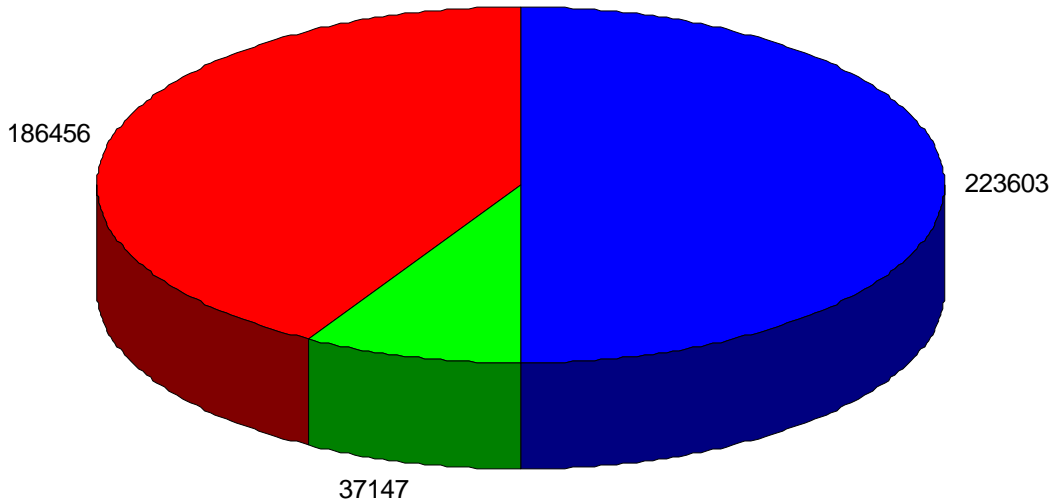
2008 Wild Horse & Burro AMLs reported by BLMs National Program Office Herd Management Area Statistics.
2009 Bighorn sheep populations obtained from Western Watersheds Project at:
<http://www.westernwatersheds.org/news-media/online-messenger/wwp-acts-protect-bighorn-sheep-central-idaho>
2009 Mule Deer Populations obtained from ID Fish & Game at:
<http://fishandgame.idaho.gov/cms/hunt/mdi/population.cfm>
2009 Elk populations obtained from the Rocky Mountain Elk Foundation at:
<http://www.rmef.org/NewsandMedia/NewsReleases/2009/ElkPopulations.htm>

Chart 27 - Montana

Montana wild horse and burro habitat loss. Herd Area acreage occupied by wild horses and burros in 1971 in relation to 2008 Herd Management Area acreage.

MT Wild Horse & Burro Habitat

HA Acreage vs. HMA Acreage



MT WH&B Herd Area (HA) Acreage in 1971: 223,603 Acres
MT WH&B Herd Management Area (HMA) Acreage in 2008: 37,147 Acres (16.6%)
MT Habitat Loss: -186,456 Acres (-83.4%)

All acreage taken from BLMs National Program Office - FY08 Montana's Herd Management Area Statistics.

Chart 28 - Montana

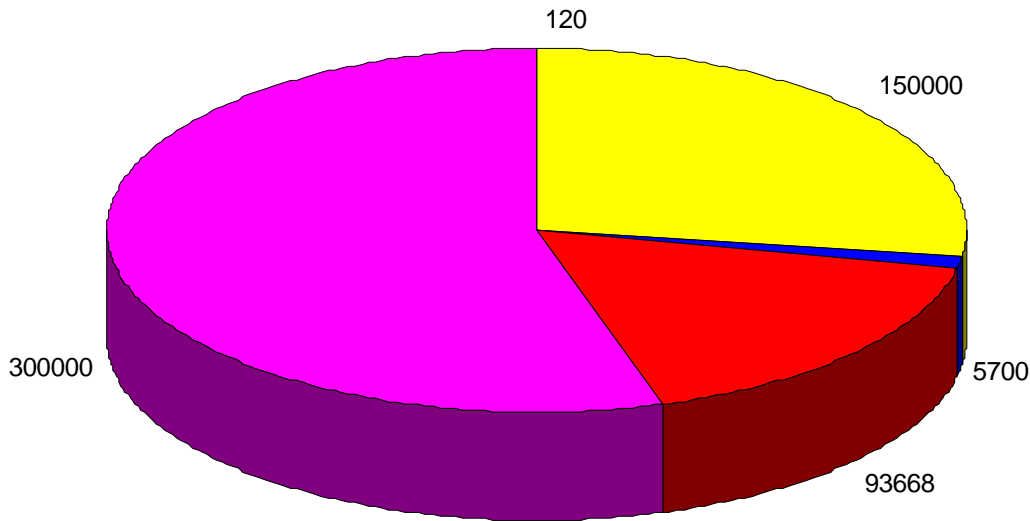
Relative authorized proportions of wild horses, livestock authorizations, bighorn sheep, pronghorn antelope and elk populations for the state of Montana.

Livestock populations were calculated using BLMs 2009 Montana Livestock Authorization Report of annual forage allocations as represented by Animal Unit Months (AUMs) authorized for livestock use in 2009 and divided by 12 to represent the potential head of cattle this allocation represents as expressed through year-round grazing.

Wild horse populations are represented by AMLs (Allowable Management Levels) issued by BLM for 2008.

2009 MT: Population Distributions

Statewide Relative Proportions



MT Wild Horse AML (2009): 120* (0.0%)
MT Bighorn Sheep (2009): 5,700 (1%)
MT Elk (2009): 150,000 (27.3%)
MT Pronghorn Antelope (2006): 300,000 (54.6%)
MT Authorized Use/Cattle (2009): 93,668 (17%)

*Reflects recent decision to increase wild horse AML from 105 to 120.

2008 Wild Horse & Burro AMLs reported by BLMs National Program Office Herd Management Area Statistics.

2009 Elk populations obtained from the Rocky Mountain Elk Foundation at:
<http://www.rmef.org/NewsandMedia/NewsReleases/2009/ElkPopulations.htm>

2009 Bighorn sheep obtained from MT Fish & Game

2006 Pronghorn antelope populations obtained from Conservation of the Northern Yellowstone Pronghorn: A Report and Possible Approach for NPCA's Involvement, Blank, Intern, Stevens, July 2006, National Parks Conservation Association, pg. 1, MT/WY average.

Chart 29 - Montana

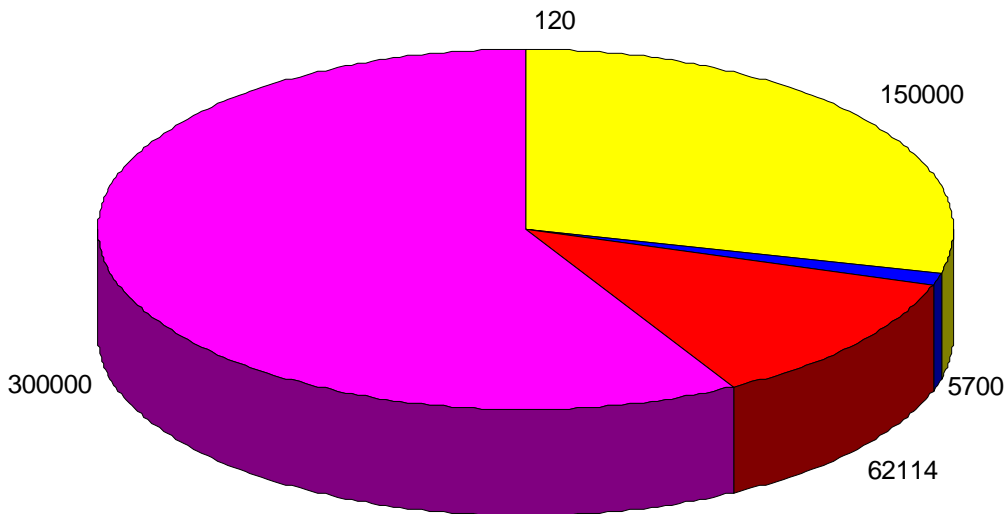
Relative authorized proportions of wild horses, livestock authorizations, bighorn sheep, pronghorn antelope and elk populations for the state of Montana.

Livestock populations were calculated using BLMs 2009 Montana Livestock Authorization Report of annual forage allocations as represented by Animal Unit Months (AUMs) *livestock actually used* in 2009 and divided by 12 to represent the potential head of cattle this allocation represents as expressed through year-round grazing.

Wild horse populations are represented by AMLs (Allowable Management Levels) issued by BLM for 2008.

2009 MT: Population Distributions

Statewide Relative Proportions



MT Wild Horse AML (2009): 120* (0.0%)
MT Bighorn Sheep (2009): 5,700 (1.1%)
MT Elk (2009): 150,000 (29%)
MT Pronghorn Antelope (2006): 300,000 (57.9%)
MT Livestock Actual Use/Cattle: 62,114 (12%)

*Reflects recent decision to increase wild horse AML from 105 to 120.

2008 Wild Horse & Burro AMLs reported by BLMs National Program Office Herd Management Area Statistics.

2009 Elk populations obtained from the Rocky Mountain Elk Foundation at:
<http://www.rmef.org/NewsandMedia/NewsReleases/2009/ElkPopulations.htm>

2009 Bighorn sheep obtained from MT Fish & Game

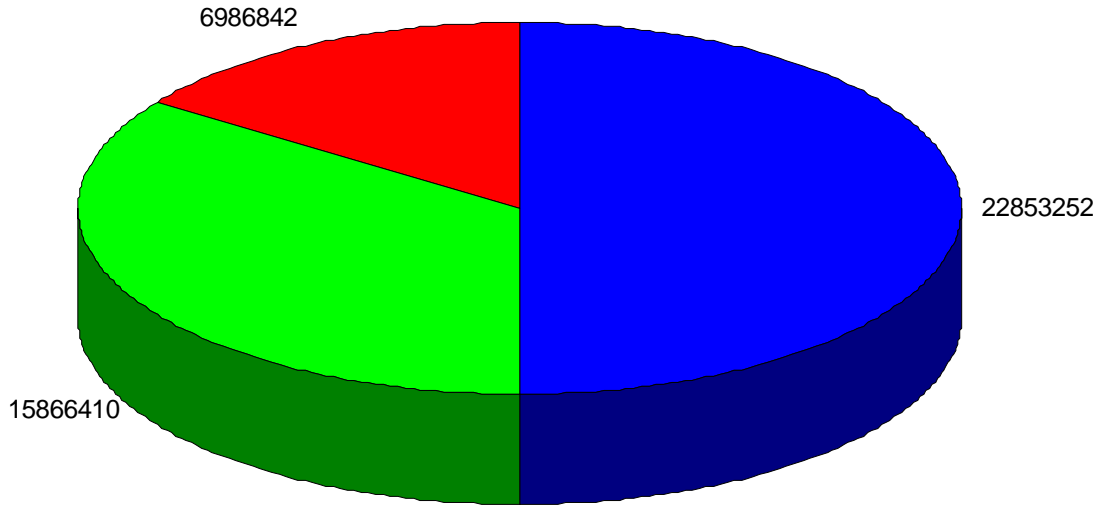
2006 Pronghorn antelope populations obtained from Conservation of the Northern Yellowstone Pronghorn: A Report and Possible Approach for NPCA's Involvement, Blank, Intern, Stevens, July 2006, National Parks Conservation Association, pg. 1, MT/WY average.

Chart 30 - Nevada

Nevada wild horse and burro habitat loss. Herd Area acreage occupied by wild horses and burros in 1971 in relation to 2008 Herd Management Area acreage.

NV Wild Horse & Burro Habitat

HA Acreage vs. HMA Acreage



NV WH&B Herd Area (HA) Acreage in 1971: 22,853,252 Acres
NV WH&B Herd Management Area (HMA) Acreage in 2008: 15,866,410 Acres* (69.4%)
NV Habitat Loss: -6,986,842 Acres (-30.6%)

*Includes recent decision by NV Ely District to remove almost 1,600,000 acres from future wild horse and burro use and associative Herd Management Areas but fails to reflect 275,000 additional acreage in 3 HMAs with no reported populations. All acreage taken from BLMs National Program Office - FY08 Nevada's Herd Management Area Statistics.

Chart 31 – Nevada

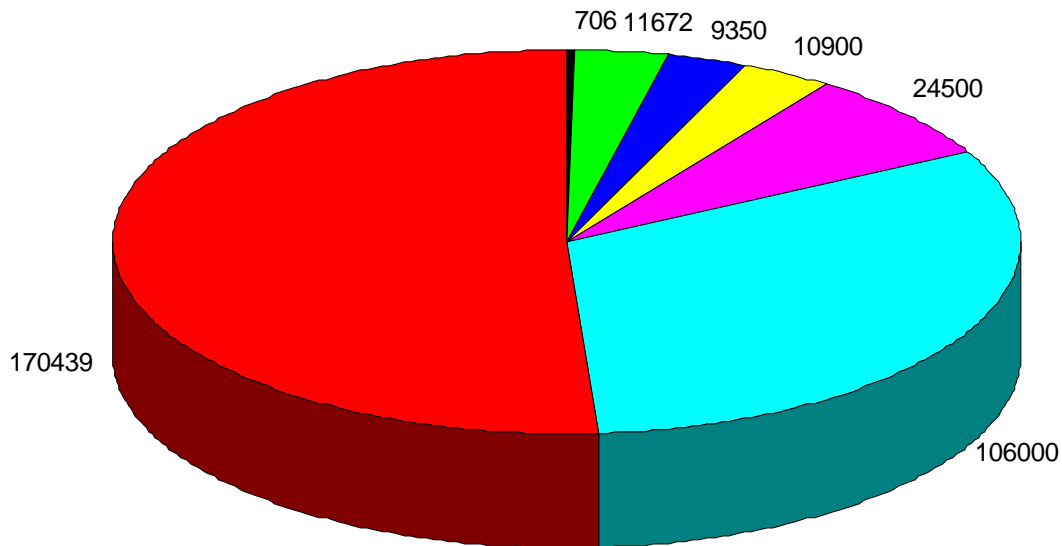
Relative authorized proportions of wild horses, wild burros, mule deer, pronghorn antelope, elk and bighorn sheep populations for the state of Nevada as of 2009.

Wild horse and burro populations are represented by AMLs (Allowable Management Levels) issued by BLM for 2008 and adjusted to exclude any AMLs that report no actual remaining populations. Also, wild horse AMLs have been adjusted to account for the zeroing out of 12 HMAs in Nevada’s Ely District that BLM has yet to update in their national reports: NV Actual Wild Horse AMLs: 11,672 - NV Actual Wild Burro AML: 706.

Livestock populations were calculated using BLMs 2009 Nevada Livestock Authorization Report of annual forage allocations as represented by Animal Unit Months (AUMs) authorized for livestock use and divided by 12 to represent the potential head of cattle this allocation represents as expressed through year-round grazing.

2009 NV: Population Distributions

Statewide Relative Proportions



- NV Wild Horse AML (2009): 11,672 (3.5%)
- NV Wild Burros AML (2009): 706 (0.2%)
- NV Bighorn Sheep (2008): 9,350 (2.8%)
- NV Elk (2009): 10,900 (3.3%)
- NV Pronghorn Antelope: 24,500 (7.3%)
- NV Mule Deer: 106,000 (31.8%)
- NV Livestock Authorized Use/Cattle: 170,439 (51.1%)

2009 Wildlife populations were obtained from Nevada Department of Wildlife except elk populations obtained from the Rocky Mountain Elk Foundation at:
<http://www.rmef.org/NewsandMedia/NewsReleases/2009/ElkPopulations.htm>

Chart 32 – Nevada

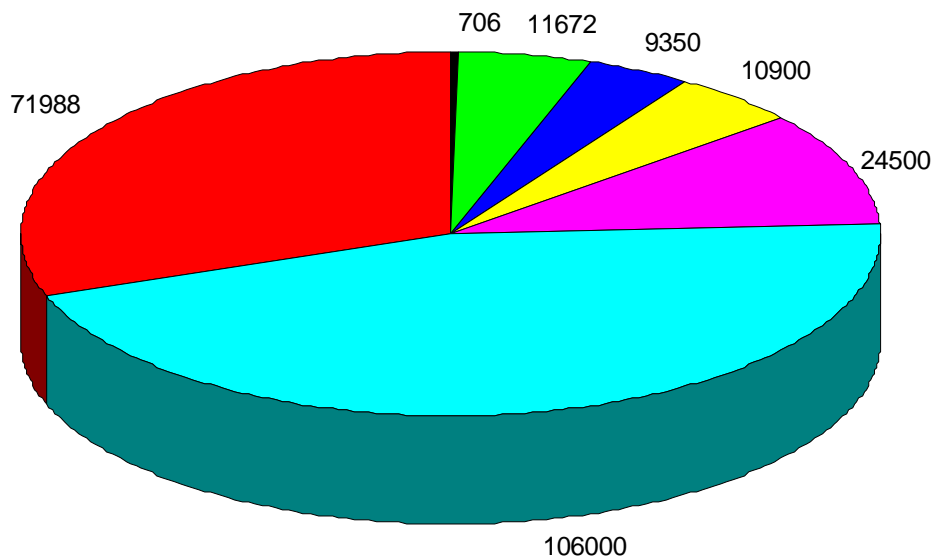
Relative authorized proportions of wild horses, wild burros, mule deer, pronghorn antelope, elk and bighorn sheep populations for the state of Nevada as of 2009.

Livestock populations were calculated using BLMs 2009 Nevada Livestock Authorization Report of annual forage allocations as represented by Animal Unit Months (AUMs) *actually used* by livestock in 2009 and divided by 12 to represent the potential head of cattle this allocation represents as expressed through year-round grazing.

Wild horse and burro populations are represented by AMLs (Allowable Management Levels) issued by BLM for 2008 and adjusted to exclude any AMLs that report no actual remaining populations. Also, wild horse AMLs have been adjusted to account for the zeroing out of 12 HMAs in Nevada’s Ely District that BLM has yet to update in their national reports: NV Actual Wild Horse AMLs: 11,672 - NV Actual Wild Burro AML: 706.

2009 NV: Population Distributions

Statewide Relative Proportions



- NV Wild Horse AML: 11,672 (5%)
- NV Wild Burros AML: 706 (.03%)
- NV Bighorn Sheep: 9,350 (4%)
- NV Elk: 10,900 (4.6%)
- NV Pronghorn Antelope: 24,500 (10.4%)
- NV Mule Deer: 106,000 (45.1%)
- NV Livestock Actual Use/Cattle: 71,988 (30.6%)

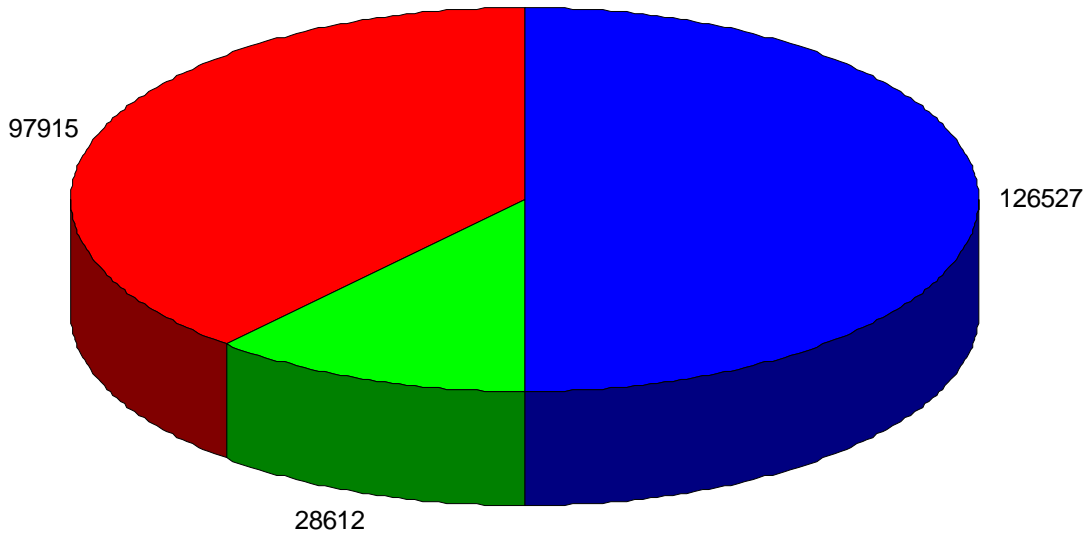
2009 Wildlife populations were obtained from Nevada Department of Wildlife except elk populations obtained from the Rocky Mountain Elk Foundation at: <http://www.rmef.org/NewsandMedia/NewsReleases/2009/ElkPopulations.htm>

Chart 33 – New Mexico

New Mexico wild horse and burro habitat loss. Herd Area acreage occupied by wild horses and burros in 1971 in relation to 2008 Herd Management Area acreage.

NM Wild Horse & Burro Habitat

HA Acreage vs. HMA Acreage



NM WH&B Herd Area (HA) Acreage in 1971: 126,527 Acres
NM WH&B Herd Management Area (HMA) Acreage in 2008: 28,612 Acres (22.6%)
NM Habitat Loss: -97,915 Acres (-77.4%)

All acreage taken from BLMs National Program Office - FY08 New Mexico's Herd Management Area Statistics.

Chart 34 – New Mexico

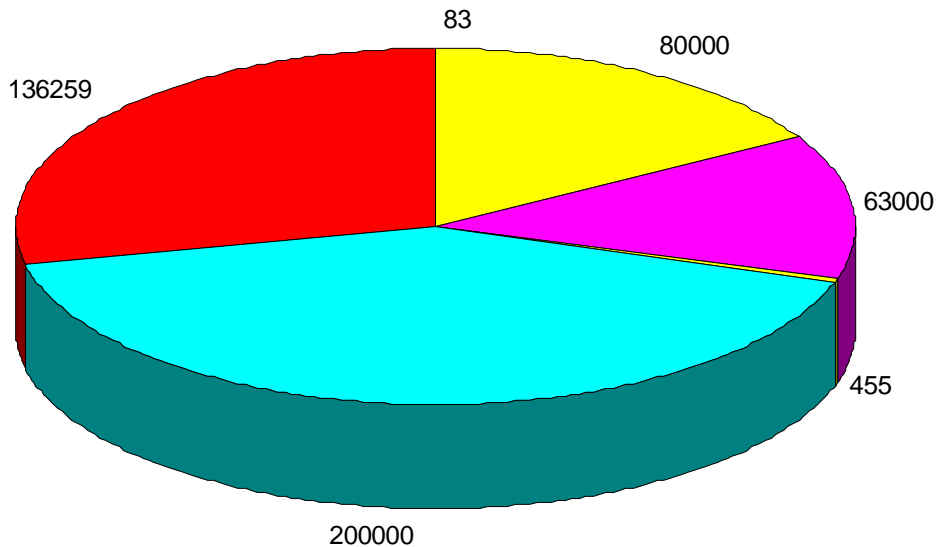
Relative authorized proportions of wild horses, livestock authorizations, mule deer, pronghorn antelope, elk and bighorn sheep populations for the state of New Mexico.

Livestock populations were calculated using BLMs 2009 New Mexico’s Livestock Authorization Report of annual forage allocations as represented by Animal Unit Months (AUMs) authorized for livestock use in 2009 and divided by 12 to represent the potential head of cattle this allocation represents as expressed through year-round grazing.

Wild horse populations are represented by AMLs (Allowable Management Levels) issued by BLM.

2009 NM: Population Distributions

Statewide Relative Proportions



- NM Wild Horse AML (2008): 83 (0.0%)
- NM Bighorn Sheep (2008): 455 (0.1%)
- NM Elk (2009): 80,000 (16.7%)
- NM Pronghorn Antelope (2009): 63,000 (13.1%)
- NM Mule Deer (1999): 200,000 (41.7%)
- NM Livestock Authorized Use/Cattle (2009): 136,259 (28.4%)

2008 Wild Horse & Burro AMLs reported by BLMs National Program Office Herd Management Area Statistics.

2009 Elk populations obtained from the Rocky Mountain Elk Foundation at:
<http://www.rmef.org/NewsandMedia/NewsReleases/2009/ElkPopulations.htm>

2009 Bighorn sheep populations obtained from NM Fish & Game at:
<http://www.wildlife.state.nm.us/conservation/bighorn/documents/PopulationTrends.htm>

2009 Pronghorn antelope population obtained from NM Fish & Game at:
<http://www.wildlife.state.nm.us/commission/presentations/documents/PronghornManagement.pdf>

1999 Mule Deer Population obtained from:
<http://www.wildlife.state.nm.us/publications/documents/muledeer.pdf>

Chart 35 – New Mexico

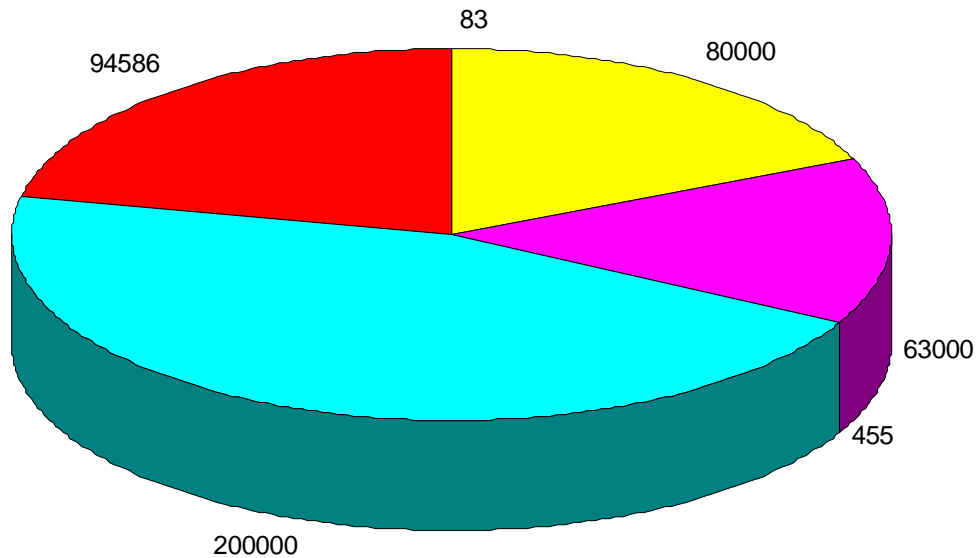
Relative authorized proportions of wild horses, authorized livestock, mule deer, pronghorn antelope, elk and bighorn sheep populations for the state of New Mexico as of 2009.

Livestock populations were calculated using BLMs 2009 New Mexico’s Livestock Authorization Report of annual forage allocations as represented by Animal Unit Months (AUMs) *actually used* by livestock in 2009 and divided by 12 to represent the potential head of cattle this allocation represents as expressed through year-round grazing.

Wild horse populations are represented by AMLs (Allowable Management Levels) issued by BLM for 2008.

2009 NM: Population Distributions

Statewide Relative Proportions



- NM Wild Horse AML (2008): 83 (0.0%)
- NM Bighorn Sheep (2008): 455 (0.1%)
- NM Elk (2009): 80,000 (18.3%)
- NM Pronghorn Antelope (2009): 63,000 (14.4%)
- NM Mule Deer (1999): 200,000 (45.6%)
- NM Actual Livestock Use/Cattle (2009): 94,586 (21.6%)

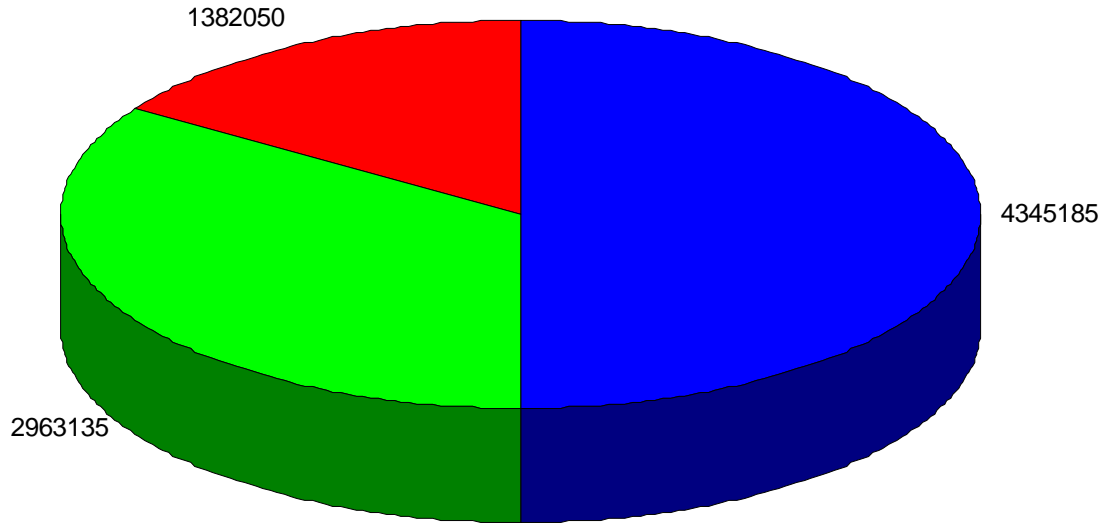
2008 Wild Horse & Burro AMLs reported by BLMs National Program Office Herd Management Area Statistics.
2009 Elk populations obtained from the Rocky Mountain Elk Foundation at:
<http://www.rmef.org/NewsandMedia/NewsReleases/2009/ElkPopulations.htm>
2009 Bighorn sheep populations obtained from NM Fish & Game at:
<http://www.wildlife.state.nm.us/conservation/bighorn/documents/PopulationTrends.htm>
2009 Pronghorn antelope population obtained from NM Fish & Game at:
<http://www.wildlife.state.nm.us/commission/presentations/documents/PronghornManagement.pdf>
1999 Mule Deer Population obtained from:
<http://www.wildlife.state.nm.us/publications/documents/muledeer.pdf>

Chart 36 - Oregon

Oregon wild horse and burro habitat loss. Herd Area acreage occupied by wild horses and burros in 1971 in relation to 2008 Herd Management Area acreage.

OR Wild Horse & Burro Habitat

HA Acreage vs. HMA Acreage



OR WH&B Herd Area (HA) Acreage in 1971: 4,345,185 Acres
OR WH&B Herd Management Area (HMA) Acreage in 2008: 2,963,135 Acres (68.2%)
OR Habitat Loss: -1,382,050 Acres (-31.8%)

All acreage taken from BLMs National Program Office - FY08 Oregon's Herd Management Area Statistics.

Chart 37 – Oregon

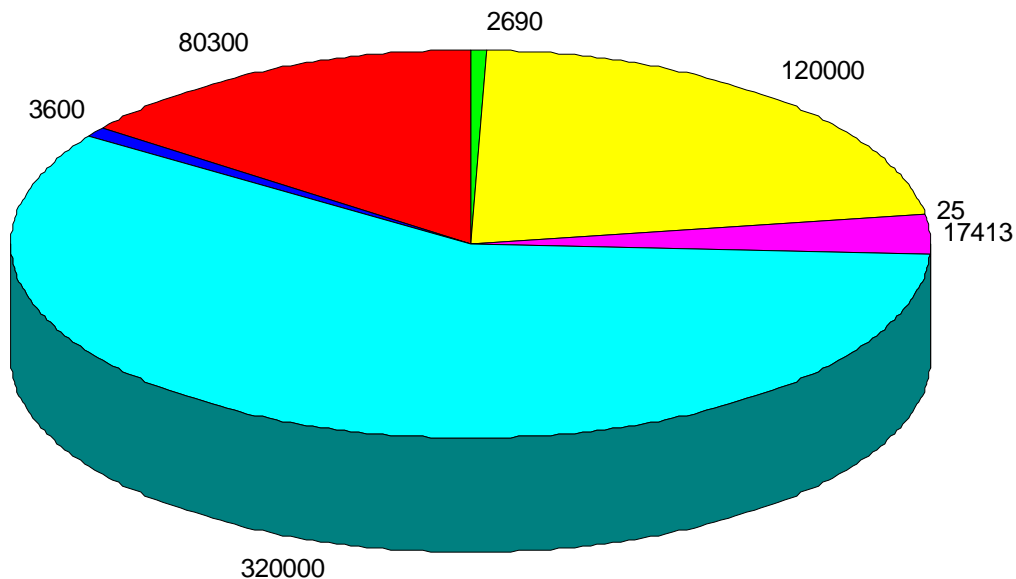
Relative authorized proportions of wild horses, wild burros, authorized livestock, black-tail deer, pronghorn antelope, elk and bighorn sheep populations for the state of Oregon as of 2009.

Livestock populations were calculated using BLMs 2009 Oregon Livestock Authorization Report of annual forage allocations as represented by Animal Unit Months (AUMs) authorized livestock use in 2009 and divided by 12 to represent the potential head of cattle this allocation represents as expressed through year-round grazing.

Wild horse and burro populations are represented by AMLs (Allowable Management Levels) issued by BLM for 2008.

2009 OR: Population Distributions

Statewide Relative Proportions



OR Wild Horse AML (2008): 2,690 (0.5%)

OR Wild Burro AML (2008): 25 (0.0%)

OR Bighorn Sheep (2008): 3,600 (0.7%)

OR Elk (2009): 120,000 (22.1%)

OR Pronghorn Antelope (2006): 17,413 (3.2%)

OR Black Tail Deer Only (2004): 320,000 (58.8%)

OR Livestock Authorized Use/Cattle (2009): 80,300 (14.8%)

2008 Wild Horse & Burro AMLs reported by BLMs National Program Office Herd Management Area Statistics.

2009 Elk populations obtained from the Rocky Mountain Elk Foundation

2004 Black Tail Deer population obtained from Oregon Fish & Game at:

http://www.dfw.state.or.us/wildlife/docs/Oregon_Black-Tailed_Deer_Management_Plan.pdf

2006 Pronghorn Antelope population obtained from Oregon Fish & Game at:

http://www.dfw.state.or.us/resources/hunting/big_game/controlled_hunts/reports/hunting-statistics-06/04-pronghorn.pdf

2009 Bighorn population obtained at:

<http://www.mailtribune.com/apps/pbcs.dll/article?AID=20090924/LIFE/909240304/-1?OREGONOUTDOORS>

Chart 38 – Oregon

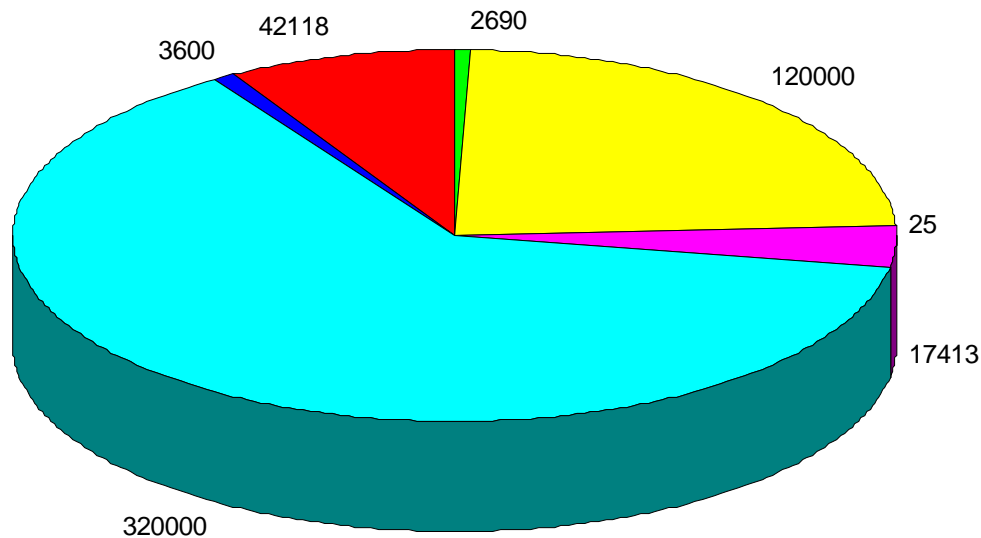
Relative authorized proportions of wild horses, wild burros, authorized livestock, black-tail deer, pronghorn antelope, elk and bighorn sheep populations for the state of Oregon as of 2009.

Livestock populations were calculated using BLMs 2009 Oregon Livestock Authorization Report of annual forage allocations as represented by Animal Unit Months (AUMs) *actually used by livestock* in 2009 and divided by 12 to represent the potential head of cattle this allocation represents as expressed through year-round grazing.

Wild horse and burro populations are represented by AMLs (Allowable Management Levels) issued by BLM for 2008.

2009 OR: Population Distributions

Statewide Relative Proportions



OR Wild Horse AML (2008): 2,690 (0.5%)

OR Wild Burro AML (2008): 25 (0.0%)

OR Bighorn Sheep (2008): 3,600 (0.7%)

OR Elk (2009): 120,000 (23.7%)

OR Pronghorn Antelope (2006): 17,413 (3.4%)

OR Deer (2004): 320,000 (63.3%)

OR Livestock Actual Use/Cattle: 42,118 (8.3%)

2008 Wild Horse & Burro AMLs reported by BLMs National Program Office Herd Management Area Statistics.

2009 Elk populations obtained from the Rocky Mountain Elk Foundation

2004 Black Tail Deer population obtained from Oregon Fish & Game at:

http://www.dfw.state.or.us/wildlife/docs/Oregon_Black-Tailed_Deer_Management_Plan.pdf

2006 Pronghorn Antelope population obtained from Oregon Fish & Game at:

http://www.dfw.state.or.us/resources/hunting/big_game/controlled_hunts/reports/hunting-statistics-06/04-pronghorn.pdf

2009 Bighorn population obtained at:

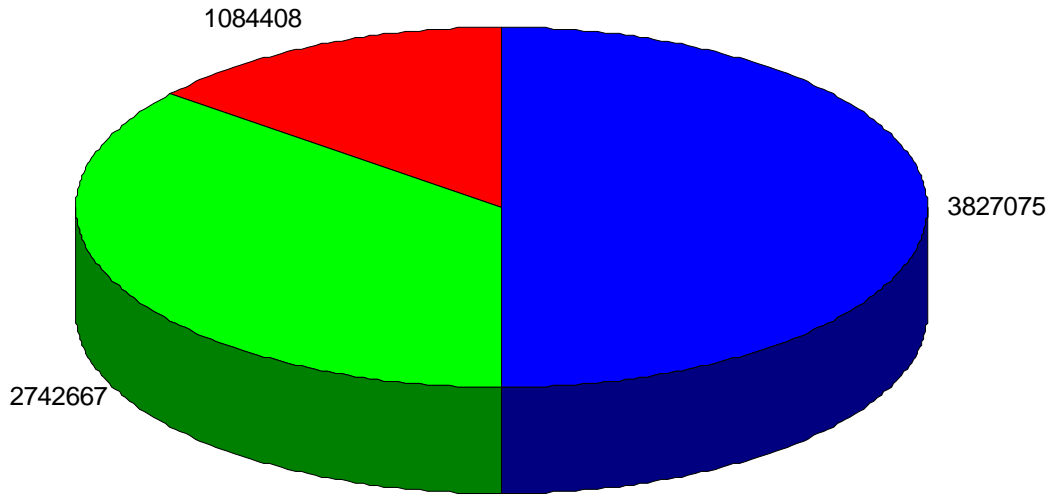
<http://www.mailtribune.com/apps/pbcs.dll/article?AID=20090924/LIFE/909240304/-1?OREGONOUTDOORS>

Chart 39 - Utah

Utah wild horse and burro habitat loss. Herd Area acreage occupied by wild horses and burros in 1971 in relation to 2008 Herd Management Area acreage.

UT Wild Horse & Burro Habitat

HA Acreage vs. HMA Acreage



UT WH&B Herd Area (HA) Acreage in 1971: 3,827,075 Acres
UT WH&B Herd Management Area (HMA) Acreage in 2008: 2,742,667 Acres (71.7%)
UT Habitat Loss: -1,084,408 Acres (-28.3%)

All acreage taken from BLMs National Program Office - FY08 Utah's Herd Management Area Statistics.

Chart 40 – Utah

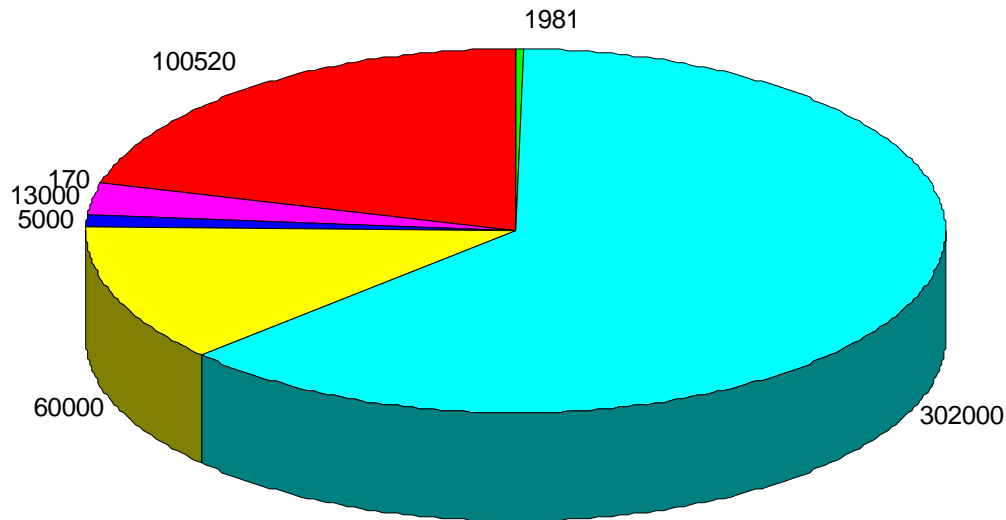
Relative authorized proportions of wild horses, wild burros, authorized livestock, mule deer, pronghorn antelope, elk and bighorn sheep populations for the state of Utah as of 2009.

Livestock populations were calculated using BLMs 2009 Utah Livestock Authorization Report of annual forage allocations as represented by Animal Unit Months (AUMs) for authorized livestock use in 2009 and divided by 12 to represent the potential head of cattle this allocation represents as expressed through year-round grazing.

Wild horse and burro populations are represented by AMLs (Allowable Management Levels) issued by BLM for 2008.

2009 UT: Population Distributions

Statewide Relative Proportions



- UT Wild Horse AML (2008): 1,981 (0.4%)
- UT Wild Burro AML (2008): 170 (0.0%)
- UT Bighorn Sheep (2008): 5,000 (1%)
- UT Elk (2009): 60,000 (12.4%)
- UT Pronghorn Antelope (2009): 13,000 (2.7%)
- UT Mule Deer (2007): 302,000 (62.6%)
- UT Livestock Authorized Use/Cattle (2009): 100,520 (20.8%)

2008 Wild Horse & Burro AMLs reported by BLMs National Program Office Herd Management Area Statistics.

2009 Elk populations obtained from the Rocky Mountain Elk Foundation

2007 Mule Deer population obtained from Utah Division of Wildlife at:

http://wildlife.utah.gov/hunting/biggame/pdf/mule_deer_plan%20approved_12_4_2008.pdf

2009 Pronghorn Antelope population obtained from Utah Division of Wildlife at:

http://wildlife.utah.gov/hunting/biggame/pdf/Statewide_prong_mgmt_2009.pdf

2008 Bighorn population obtained from Utah Division of Wildlife at:

<http://wildlife.utah.gov/hunting/biggame/pdf/bighorn-plan.pdf>

Chart 41 – Utah

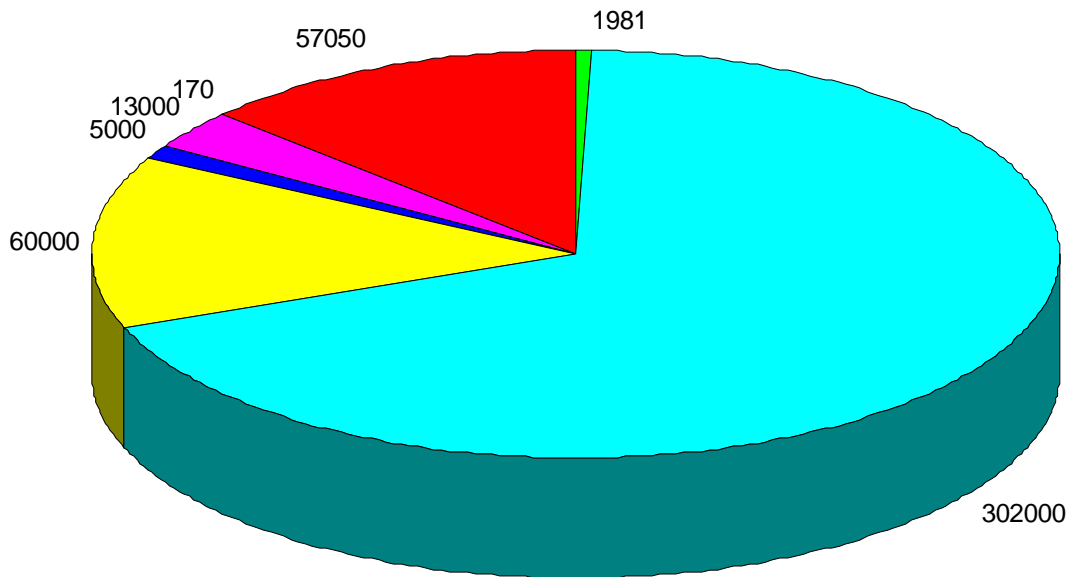
Relative authorized proportions of wild horses, wild burros, authorized livestock, mule deer, pronghorn antelope, elk and bighorn sheep populations for the state of Utah as of 2009.

Livestock populations were calculated using BLMs 2009 Utah Livestock Authorization Report of annual forage allocations as represented by Animal Unit Months (AUMs) *actually used by livestock* in 2009 and divided by 12 to represent the potential head of cattle this allocation represents as expressed through year-round grazing.

Wild horse and burro populations are represented by AMLs (Allowable Management Levels) issued by BLM for 2008.

2009 UT: Population Distributions

Statewide Relative Proportions



UT Wild Burro AML (2008): 170 (0.0%)
UT Bighorn Sheep (2008): 5,000 (1.1%)
UT Elk (2009): 60,000 (13.7%)
UT Pronghorn Antelope (2009): 13,000 (3%)
UT Mule Deer (2007): 302,000 (68.8%)
UT Livestock Actual Use/Cattle (2009): 57,050 (13%)

2008 Wild Horse & Burro AMLs reported by BLMs National Program Office Herd Management Area Statistics.

2009 Elk populations obtained from the Rocky Mountain Elk Foundation

2007 Mule Deer population obtained from Utah Division of Wildlife at:

http://wildlife.utah.gov/hunting/biggame/pdf/mule_deer_plan%20approved_12_4_2008.pdf

2009 Pronghorn Antelope population obtained from Utah Division of Wildlife at:

http://wildlife.utah.gov/hunting/biggame/pdf/Statewide_prong_mgmt_2009.pdf

2008 Bighorn population obtained from Utah Division of Wildlife at:

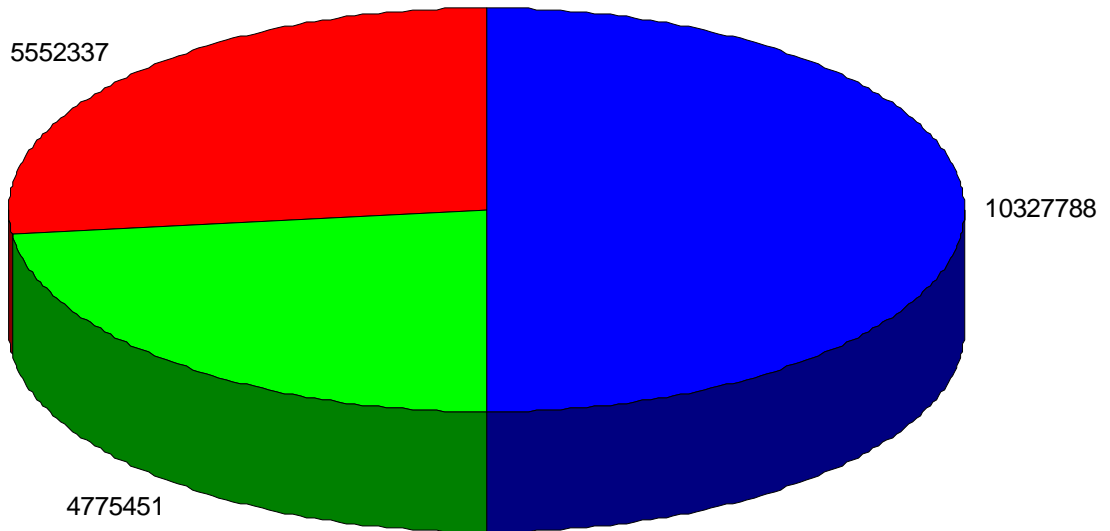
<http://wildlife.utah.gov/hunting/biggame/pdf/bighorn-plan.pdf>

Chart 42 - Wyoming

Wyoming wild horse and burro habitat loss. Herd Area acreage occupied by wild horses and burros in 1971 in relation to 2008 Herd Management Area acreage.

Wild Horse & Burro Habitat

HA Acreage vs. HMA Acreage



WY WH&B Herd Area (HA) Acreage in 1971: 10,327,788 Acres

WY WH&B Herd Management Area (HMA) Acreage in 2008: 4,775,451 Acres (46.2%)

WY Habitat Loss: -5,552,337 Acres (-53.8%)

All acreage taken from BLMs National Program Office - FY08 Wyoming's Herd Management Area Statistics.

Chart 43 – Wyoming

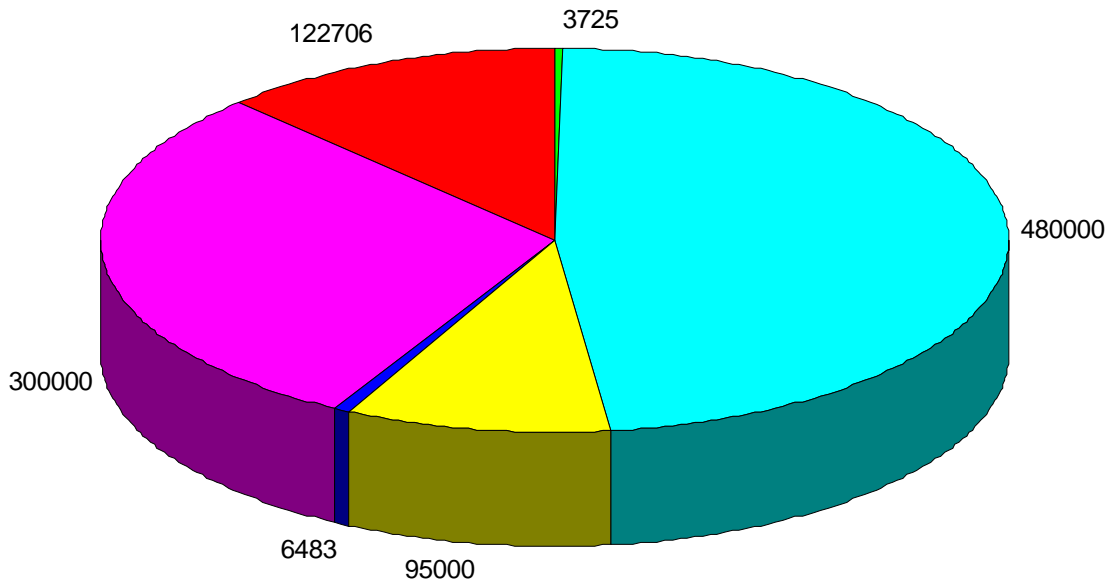
Relative authorized proportions of wild horses, wild burros, authorized livestock, mule deer, pronghorn antelope, elk and bighorn sheep populations for the state of Wyoming as of 2009.

Livestock populations were calculated using BLMs 2009 Wyoming Livestock Authorization Report of annual forage allocations as represented by Animal Unit Months (AUMs) for authorized livestock use in 2009 and divided by 12 to represent the potential head of cattle this allocation represents as expressed through year-round grazing.

Wild horse and burro populations are represented by AMLs (Allowable Management Levels) issued by BLM for 2008.

2009 WY: Population Distributions

Statewide Relative Proportions



- WY Wild Horse AML (2008): 3,725 (0.4%)
- WY Bighorn Sheep (2000): 6,483 (0.6%)
- WY Elk (2009): 95,000 (9.4%)
- WY Pronghorn Antelope (2006): 300,000 (29.8%)
- WY Mule Deer (2005): 480,000 (47.6%)
- WY Livestock Authorized Use/Cattle (2009): 122,706 (12.2%)

2008 Wild Horse & Burro AMLs reported by BLMs National Program Office Herd Management Area Statistics.

2009 Elk populations obtained from the Rocky Mountain Elk Foundation

2005 Mule Deer population obtained from Wyoming Fish & Game at:

<http://gf.state.wy.us/wildlife/MuleDeerInitiative/MDIwFeeding-Final4-24-09.pdf>

2006 Pronghorn antelope populations obtained from Conservation of the Northern Yellowstone Pronghorn: A Report and Possible Approach for NPCA's Involvement, Blank, Intern, Stevens, July 2006, National Parks Conservation Association, pg. 1, MT/WY average.

2000 Bighorn population obtained from Wyoming Fish & Game at:
<http://gf.state.wy.us/services/university/educationexam/wildmgmt/>

Chart 44 – Wyoming

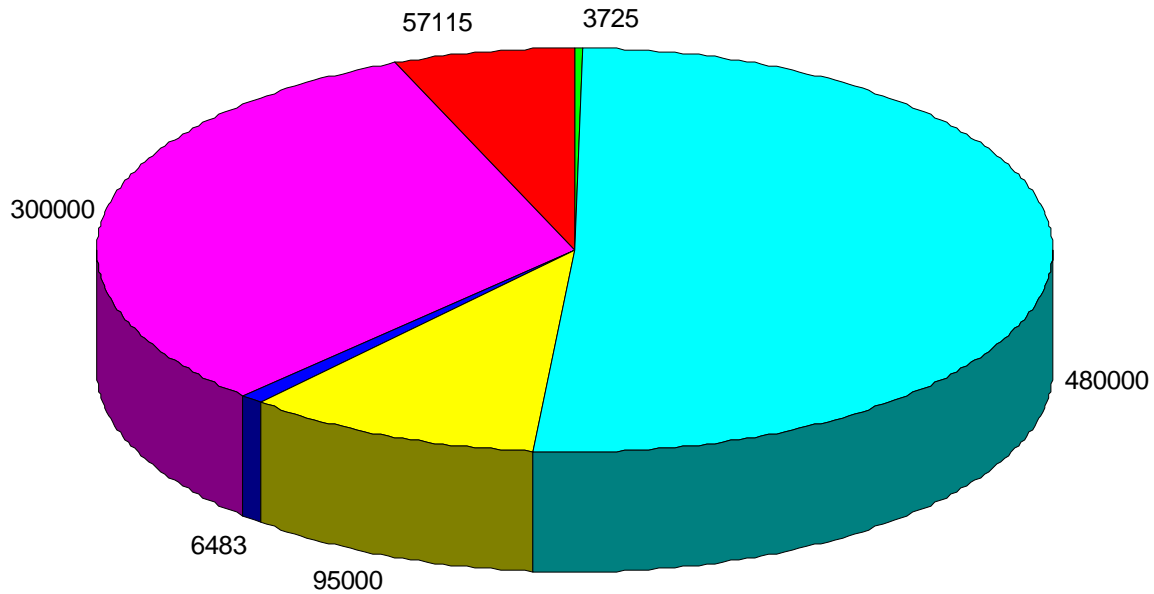
Relative authorized proportions of wild horses, wild burros, authorized livestock, mule deer, pronghorn antelope, elk and bighorn sheep populations for the state of Wyoming as of 2009.

Livestock populations were calculated using BLMs 2009 Wyoming Livestock Authorization Report of annual forage allocations as represented by Animal Unit Months (AUMs) *actually used by livestock* in 2009 and divided by 12 to represent the potential head of cattle this allocation represents as expressed through year-round grazing.

Wild horse and burro populations are represented by AMLs (Allowable Management Levels) issued by BLM for 2008.

2009 WY: Population Distribution

Statewide Relative Proportions



WY Wild Horse AML (2008): 3,725 (0.4%)
WY Bighorn Sheep (2000): 6,483 (0.7%)
WY Elk (2009): 95,000 (10.1%)
WY Pronghorn Antelope (2006): 300,000 (31.8%)
WY Mule Deer (2005): 480,000 (50.9%)
WY Livestock Actual Use/Cattle (2009): 57,115 (6.1%)

2008 Wild Horse & Burro AMLs reported by BLMs National Program Office Herd Management Area Statistics.

2009 Elk populations obtained from the Rocky Mountain Elk Foundation

2005 Mule Deer population obtained from Wyoming Fish & Game at:

<http://gf.state.wy.us/wildlife/MuleDeerInitiative/MDIwFeeding-Final4-24-09.pdf>

2006 Pronghorn antelope populations obtained from Conservation of the Northern Yellowstone Pronghorn: A Report and Possible Approach for NPCA's Involvement, Blank, Intern, Stevens, July 2006, National Parks Conservation Association, pg. 1, MT/WY average.

2000 Bighorn population obtained from Wyoming Fish & Game at:

<http://gf.state.wy.us/services/university/educationexam/wildmgmt/>